



Tanggung LNG: Commercial Success in a Challenging Environment

Jim Egger, BP Indonesia
World Gas Conference, June 2006

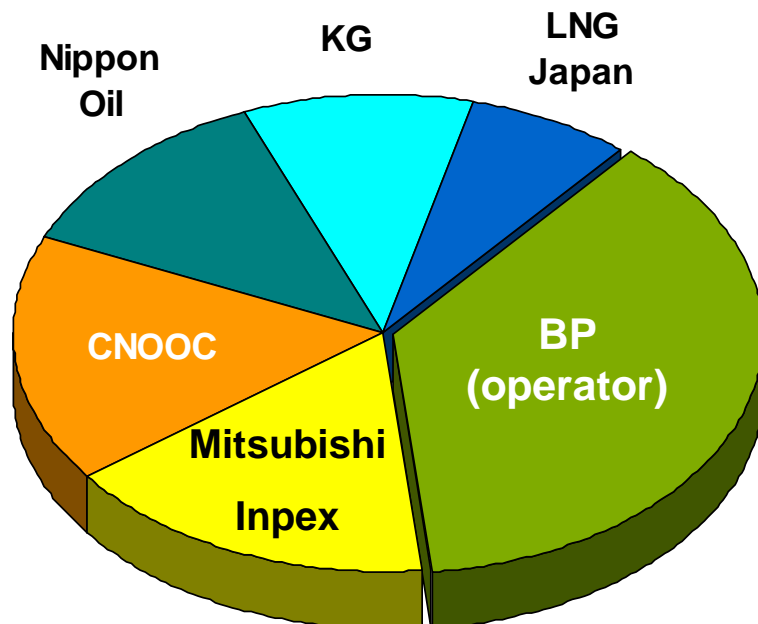
Project Location



Project Commercial Structure

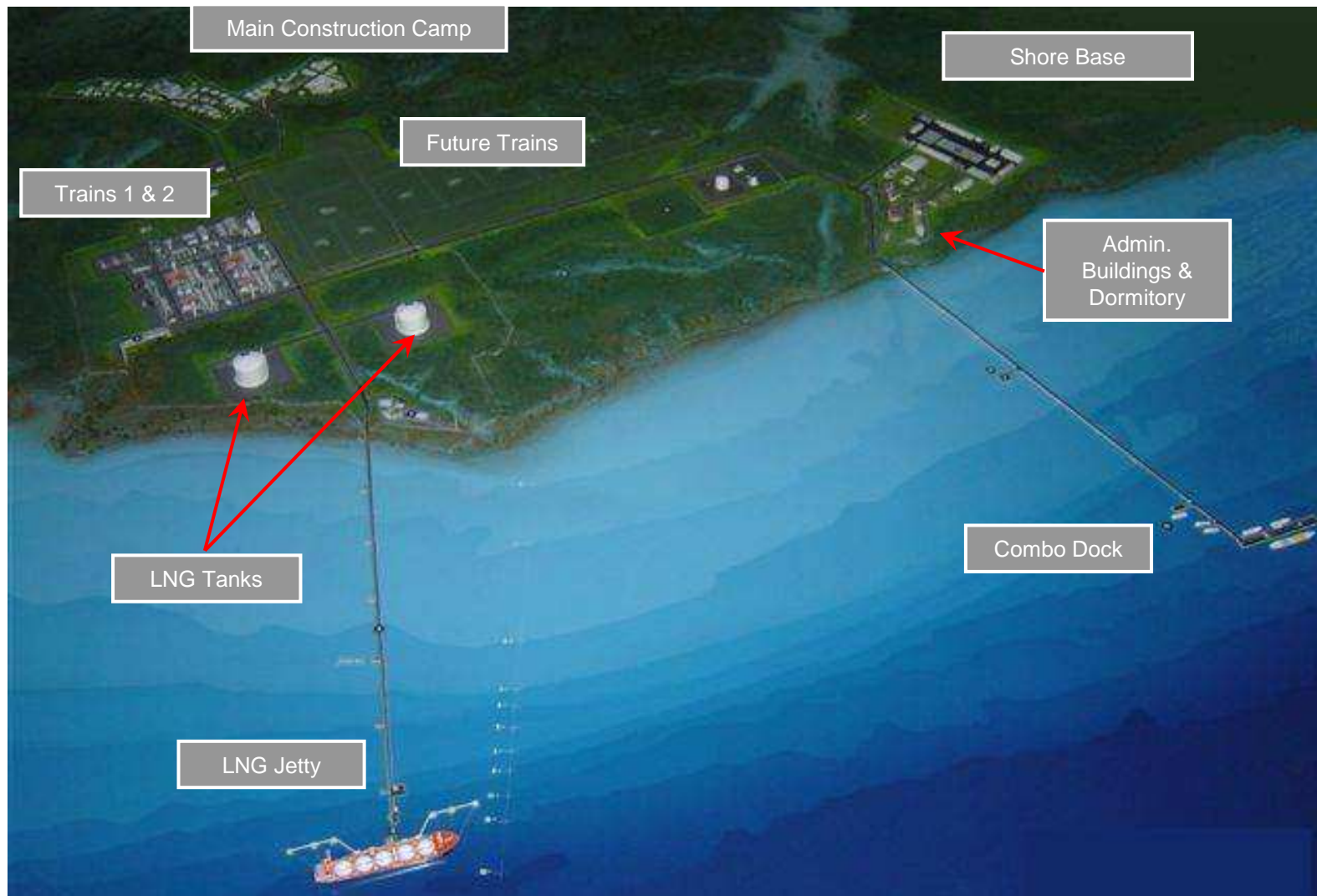


Joint Venture Partners



- **Consistent accountability along the LNG supply chain**
- **BP as Project Operator**
 - Upstream
 - LNG Plant
- **BP and Tangguh Partners**
 - Ship Charterers
 - LNG Sellers
- **BPMIGAS as Indonesia's upstream regulatory agency approves and oversees all activities**

Tangguh LNG Plant Scale Model



Tangguh LNG: Commercial Success

World Gas Conference, Amsterdam, June 2006

Project Update



- **Project is 40% complete, running ahead of schedule**
- **Project costs on track**
- **Approximately 4600 persons on site**
- **6.5 million man-hours worked without a DAFWC**
- **Integrated Social Program focusing on health, educational support, governance, economic and infrastructure development.**

Tangguh Project Site



Train 1 Main Pipe Rack



LNG Tank 1 Foundation Work



Saennga Village Renovation Project



Project Milestones



Project FID & EPC Notice to Proceed

March 2005

Production Platforms 1&2 installed

April 2007

1st Platform Gas available

March 2008

1st LNG Vessel received

October 2008

1st Drop LNG, Train 1

October 2008

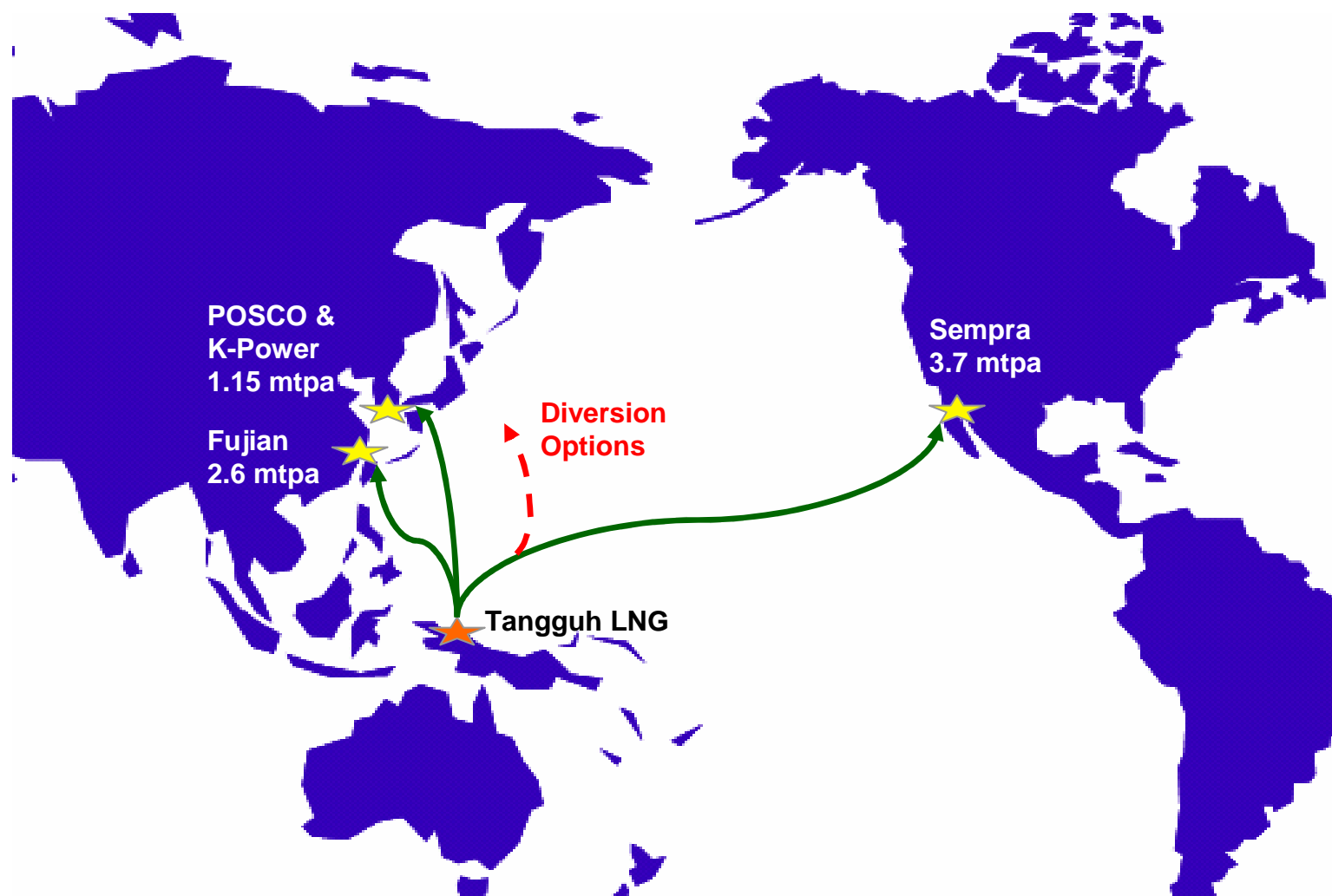
Train 1 Commercial Operations

January 2009

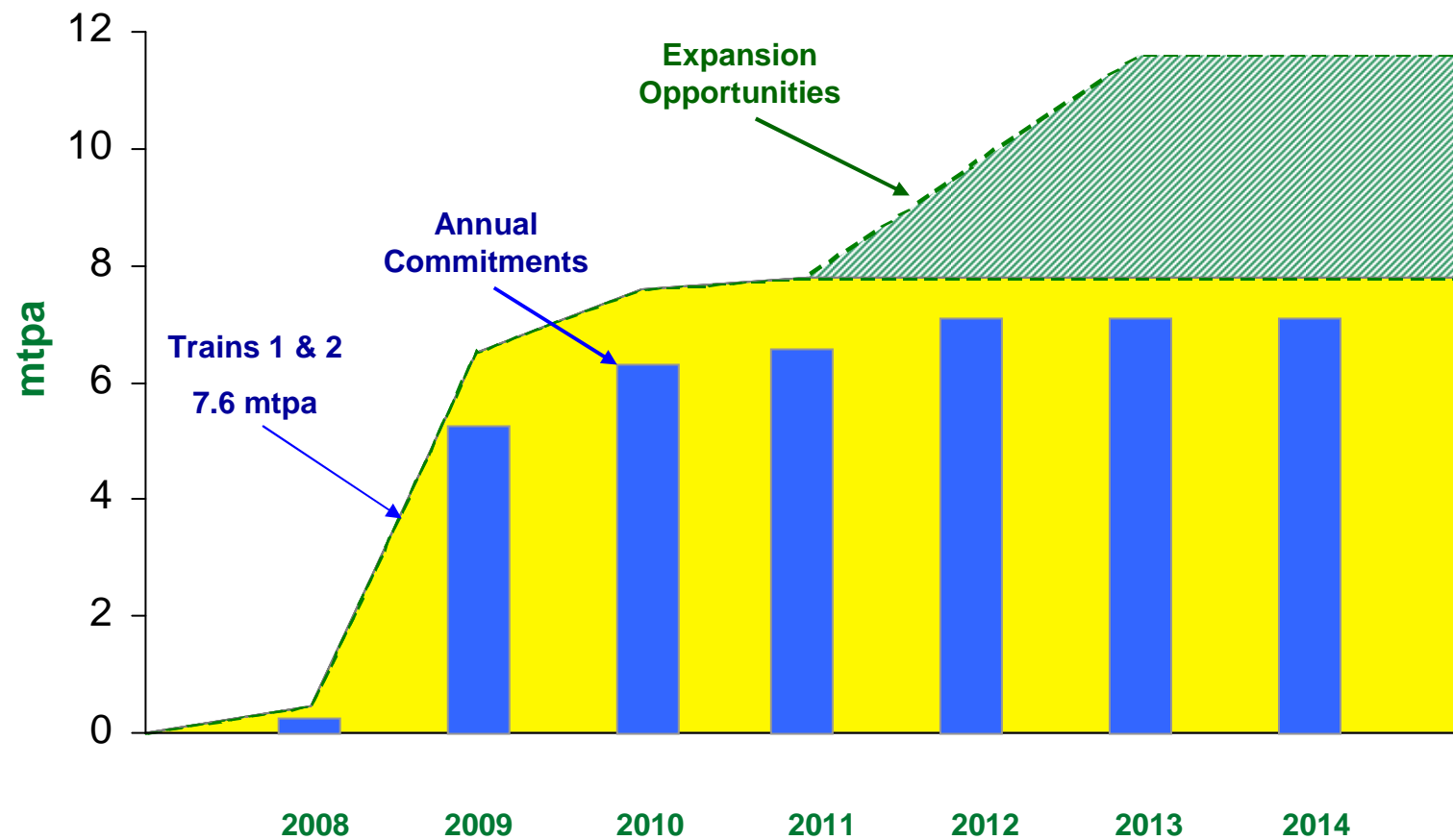
Train 2 Commercial Operations

June 2009

LNG Trades



LNG Capacity & Commitments



Strategic Value for Indonesia



- **3rd LNG center will maintain Indonesia's position as a leading LNG exporter**
- **Potential synergies with Indonesia's existing LNG plants**
- **Economic development of Papua Province in eastern Indonesia**
- **One of the largest foreign direct investments ever undertaken in Indonesia**
- **Significant job creation and domestic industry development**
- **Train 3+ provides significant long-term growth potential**



Tanggung LNG: Commercial Success in a Challenging Environment

Jim Egger, BP Indonesia
World Gas Conference, June 2006