

BRIDGE OF JINZE, BRIDGING TO THE WEB

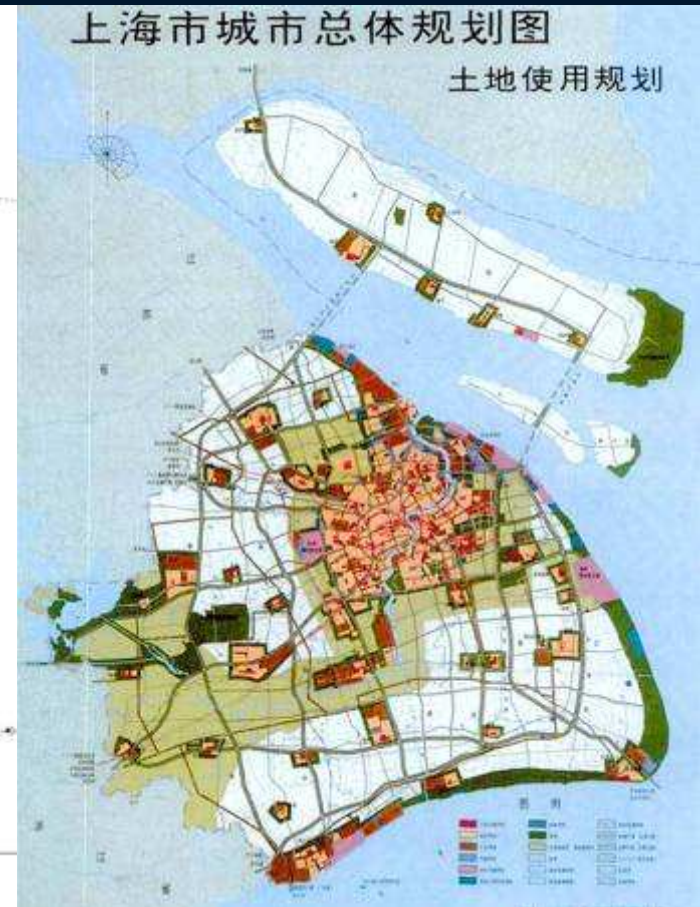


Brief Introduction of Shanghai and Energy Planning

- Shanghai is focused on the coordinated development of Yangtze Delta region, and is forming a city-scale space structure of "multi axis, multi cores".
- Shanghai will eventually form three complementary natural gas sources.



The Plan of Natural Gas Development in Shanghai

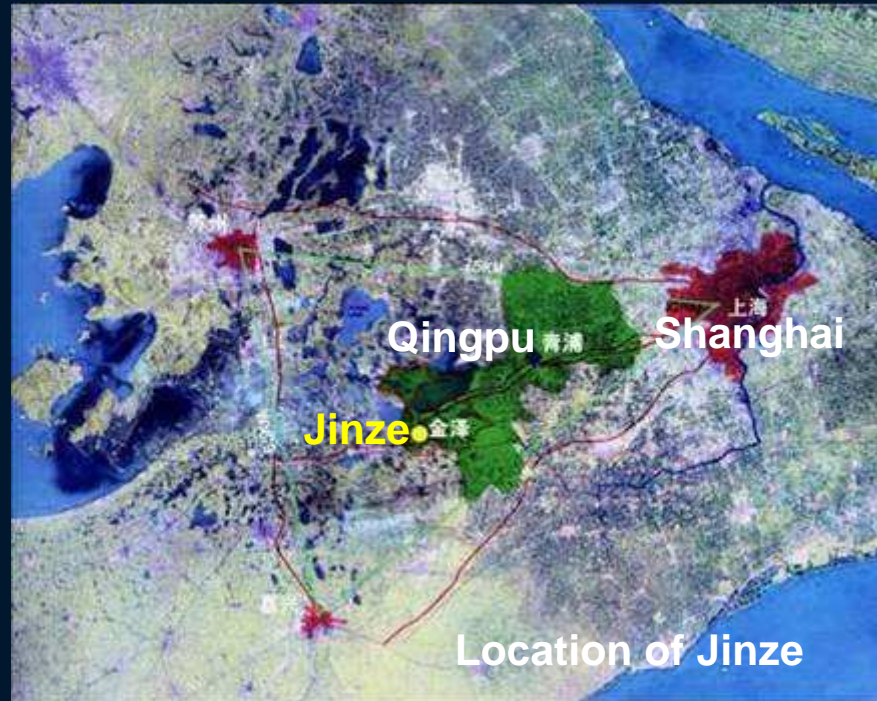


The Mast Plan of Shanghai

Jinze's Location & Background

- Jinze town is located in Qingpu district of Shanghai. Qingpu district is in the west suburb of Shanghai. It is an important gateway connecting Shanghai, Jiangsu and Zhejiang province. The biggest freshwater lake of Shanghai——Dingshan lake is located to the west of the district.

Status of Jinze



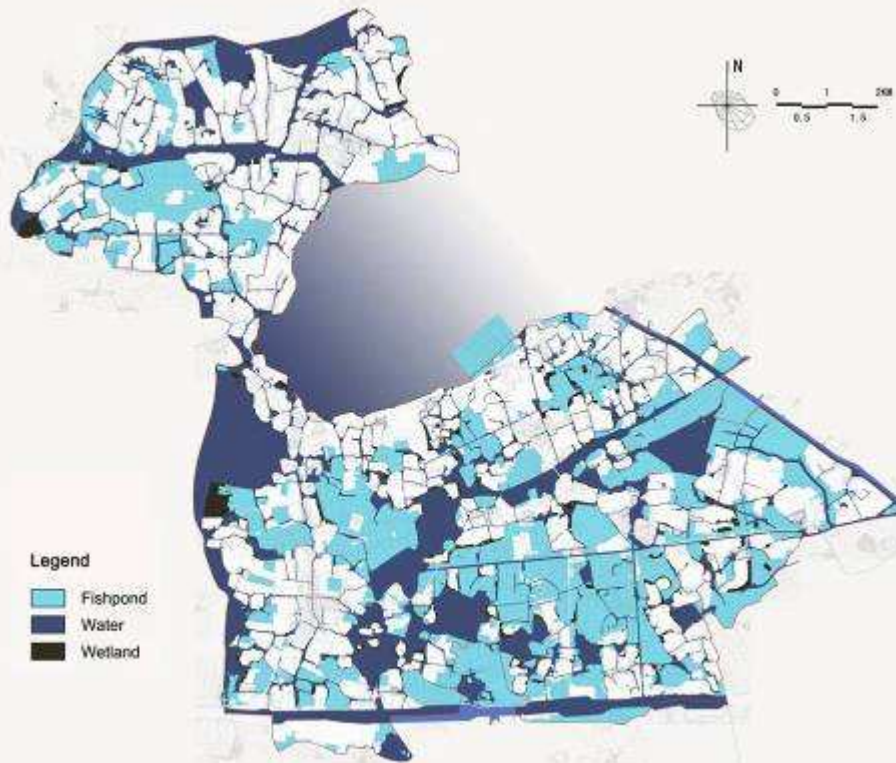
Location of Jinze



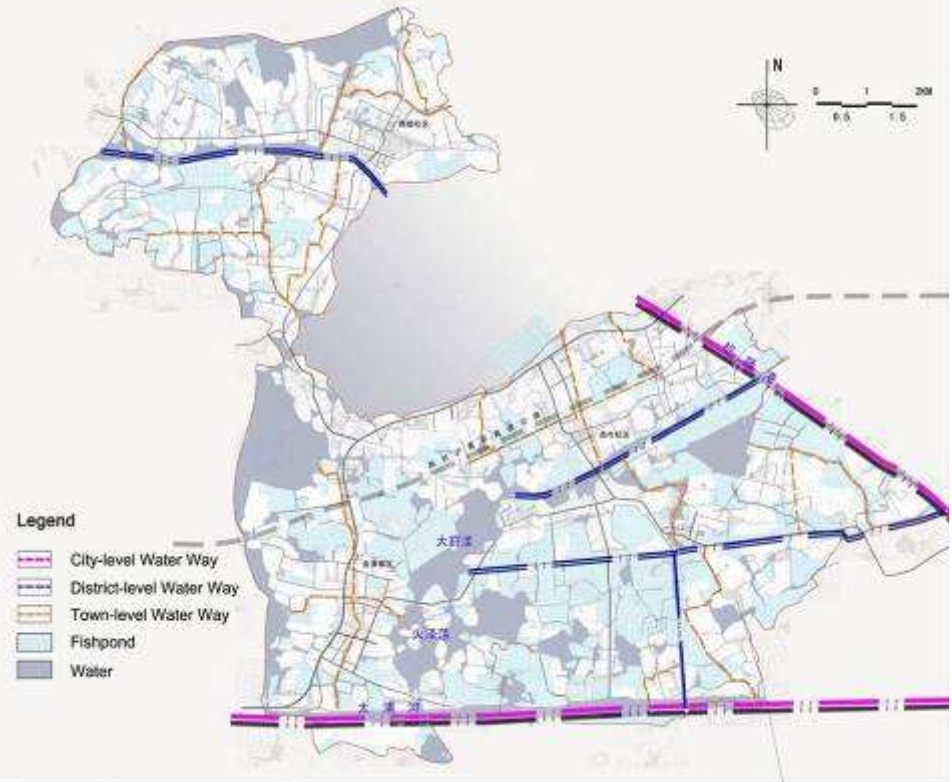
Road of Jinze



Existing Water System



Analysis of the existing water system




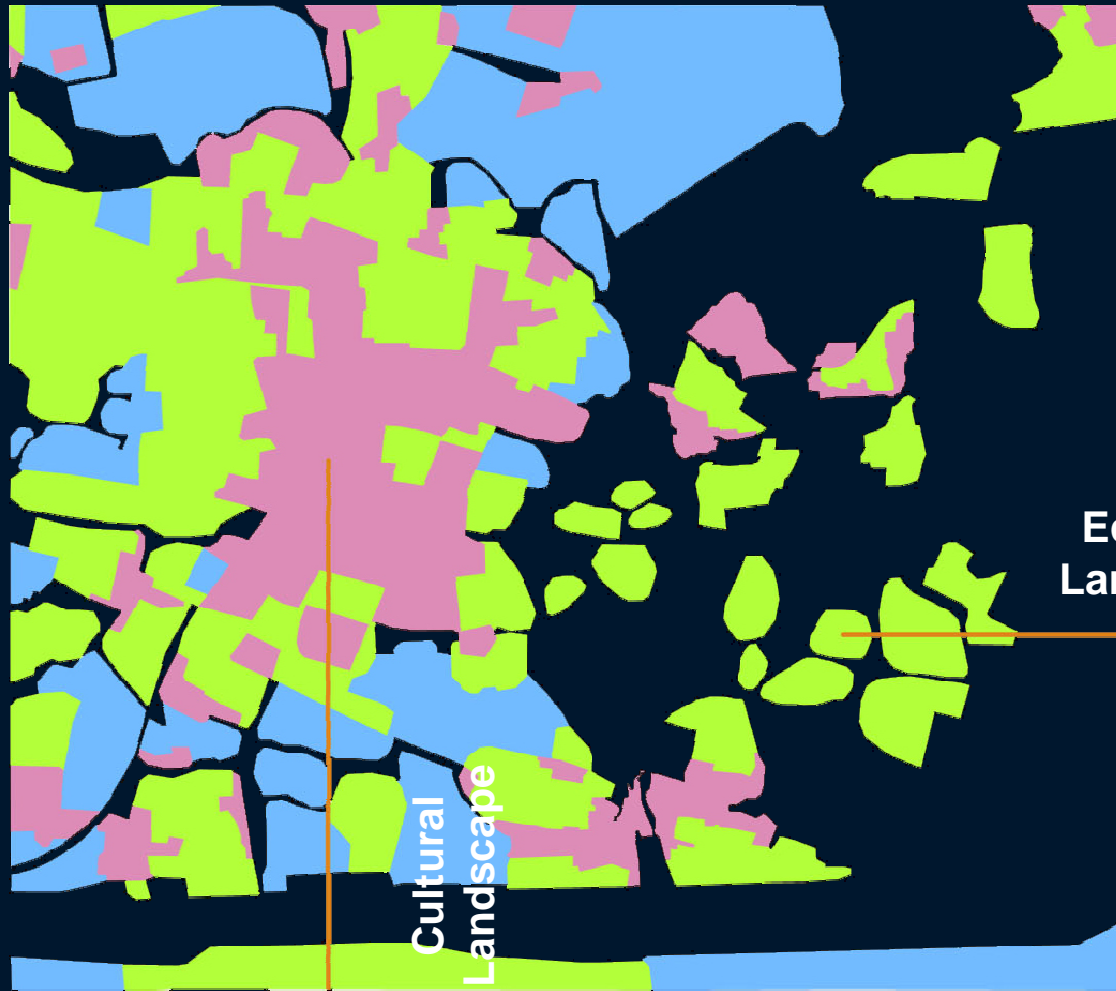
The water way rank

Analysis

- **Strength:**
Long history
with nice
environment



 **STRENGTH**



❑ Weakness:

Water self-restraint area controlling industry



☐ Threats:

Environment pollution

energy and traffic demand increase stress

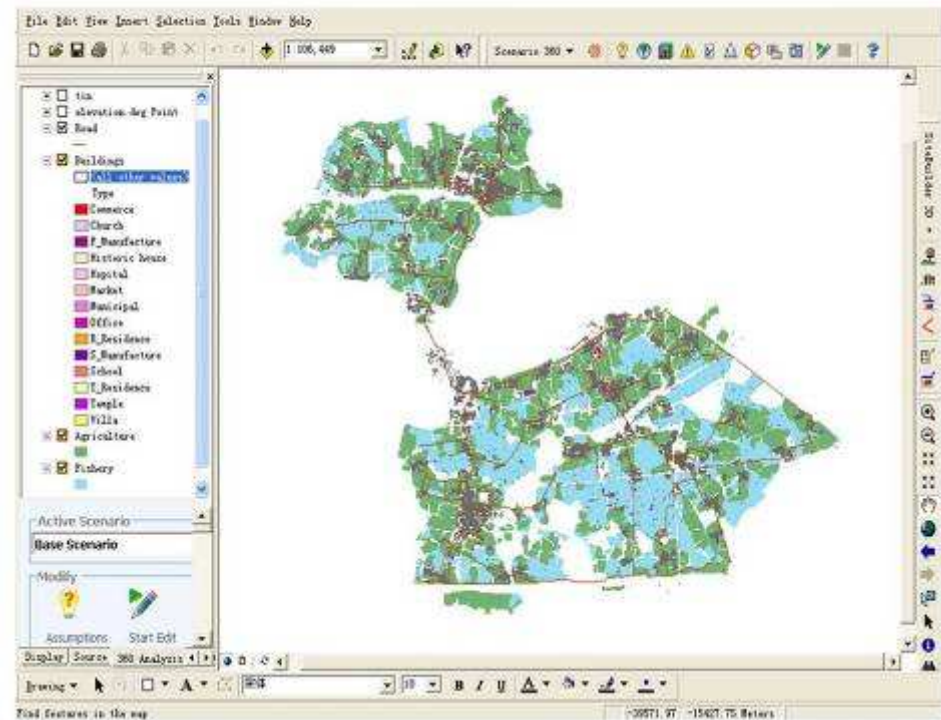


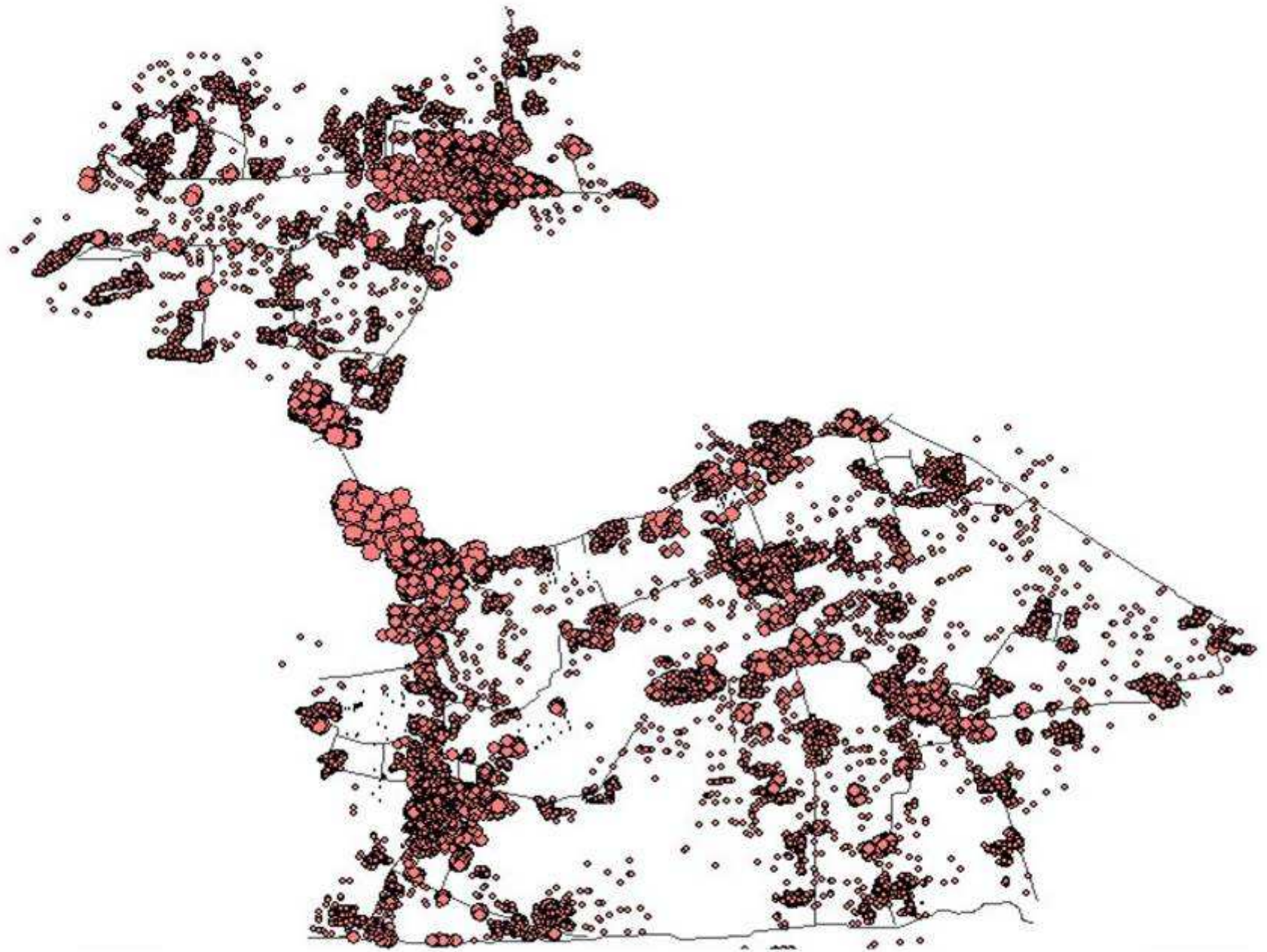
Part Four—Research on Current Energy and Water Recourse in Jinze

□ Research Method

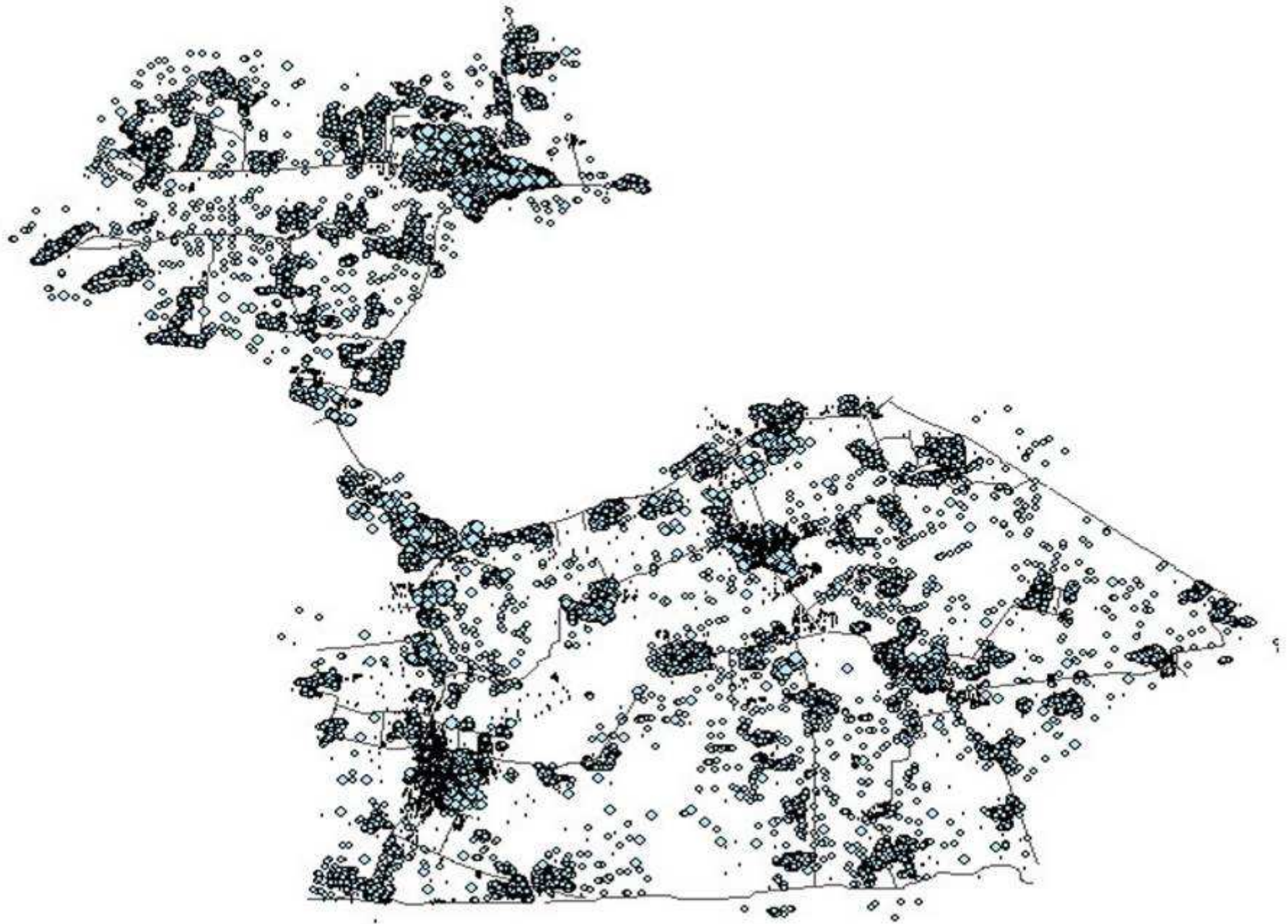
16 Parcels				
CHINESE NAME	ENGLISH NAME	CHINESE NAME	ENGLISH NAME	UNIT
1. 古镇民居	HISTORIC HOUSE	能源类 KINDS OF ENERGY		
2. 二类住宅	T_RESIDENCE	1. 电	ELEC	度 kwh
3. 别墅	VILLA	2. 柴油	DIESEL	升 L
4. 村落住宅	R_RESIDENCE	3. 液化石油气	L_P_G	罐 Pot
5. 商业	COMMERCE	4. 太阳能热水	SOLAR HEAT	标准煤 kg
6. 农贸市场	MARKET	5. 汽油	PETROL	升 L
7. 办公建筑	OFFICE	6. 秸秆	STRAW	标准煤 kg
8. 中小学	SCHOOL	水类 KINDS OF WATER		
9. 医疗单位	HOSPITAL	1. 洗漱	RINSING	吨 T
10. 庙宇	TEMPLE	2. 洗衣	LAUNDERING	吨 T
11. 教堂	CHURCH	3. 饮用水	DRINKING WATER	吨 T
12. 市政单位	MUNICIPAL	4. 清洁	CLEANING	吨 T
13. 一类工业	F_MANUFACTURE	5. 厕所	TOILET	吨 T
14. 二类工业	S_MANUFACTURE	6. 厨房	KITCHEN	吨 T
15. 农业	AGRICULTURE	7. 生活	LIVING	吨 T
16. 渔业	FISHERY	8. 景观	LANDSCAPE	吨 T
		9. 医疗	TREATMENT	吨 T
		10. 生产	PRODUCING	吨 T
		11. 灌溉	IRRIGATING	吨 T
		12. 鱼塘	FISHPOND	吨 T

The Distribution Of Sixteen Parcels





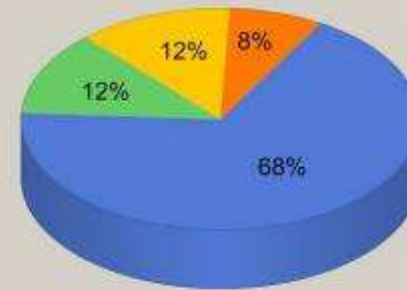
Town-wide spatial distribution of the total consumption of energy per month



Spatial distribution of the total water consumption per month

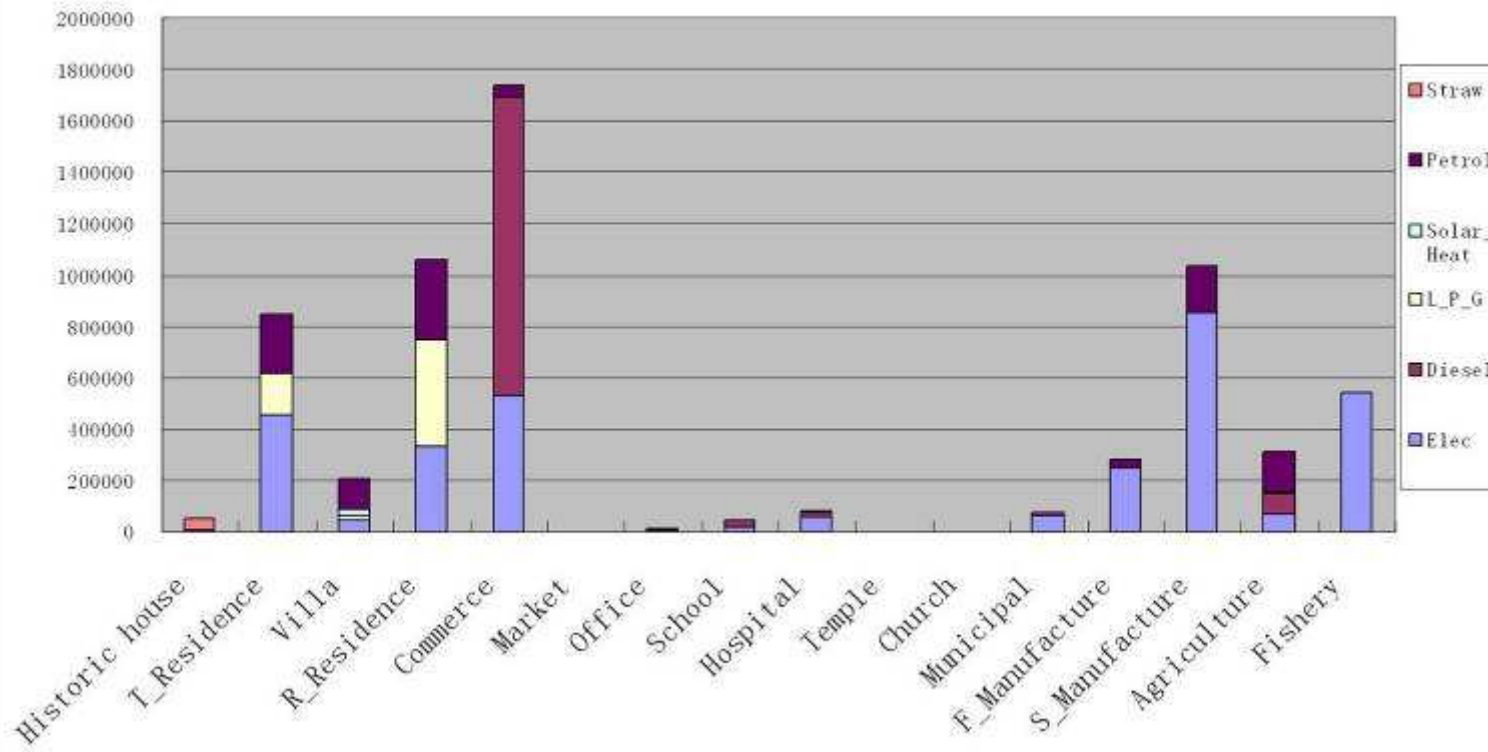
Energy Consumption

Energy Cost in Jinze Town
金泽镇能源费用支出图

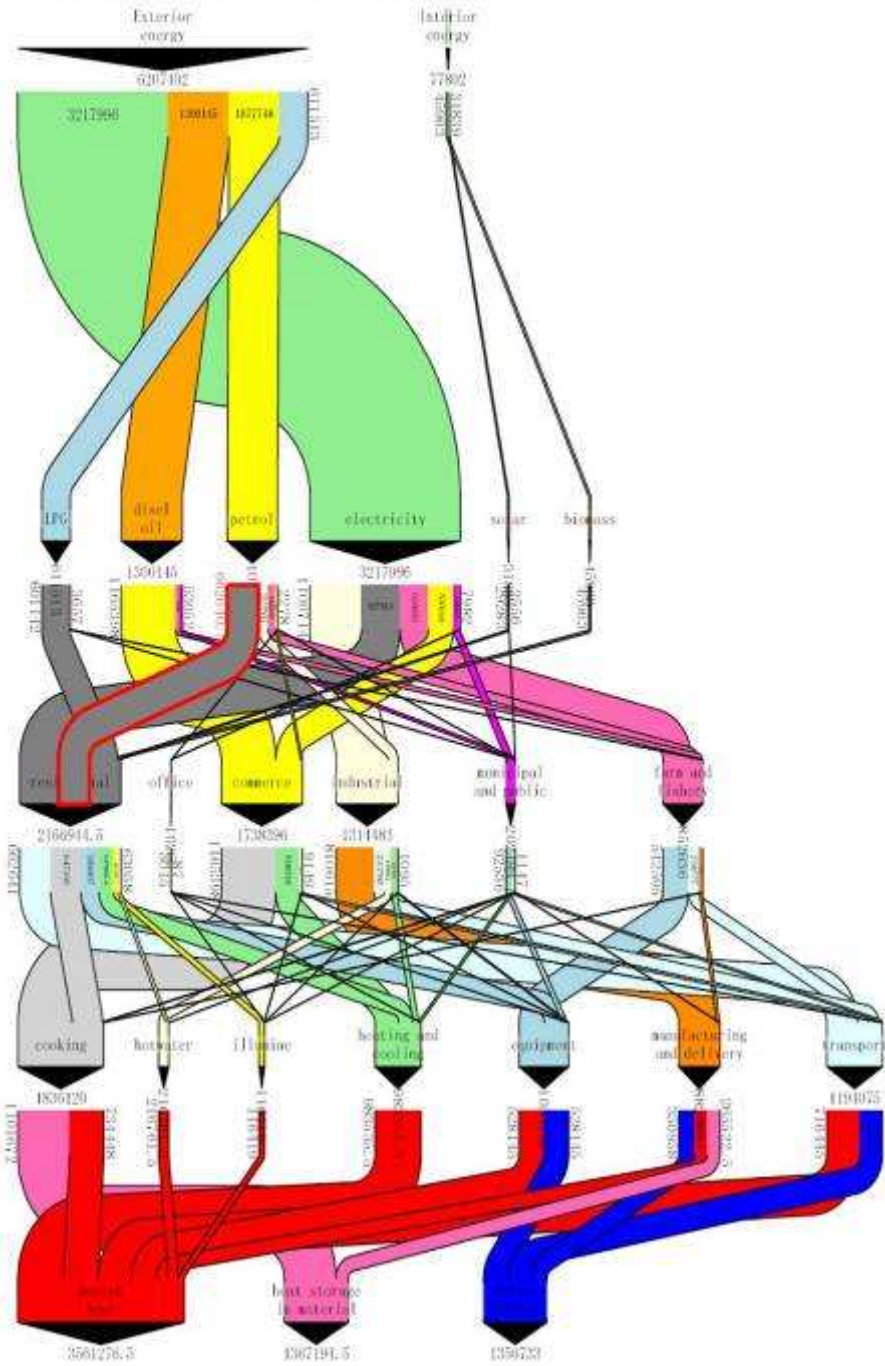


Elec Diesel Solar Petrol Straw L_P_G

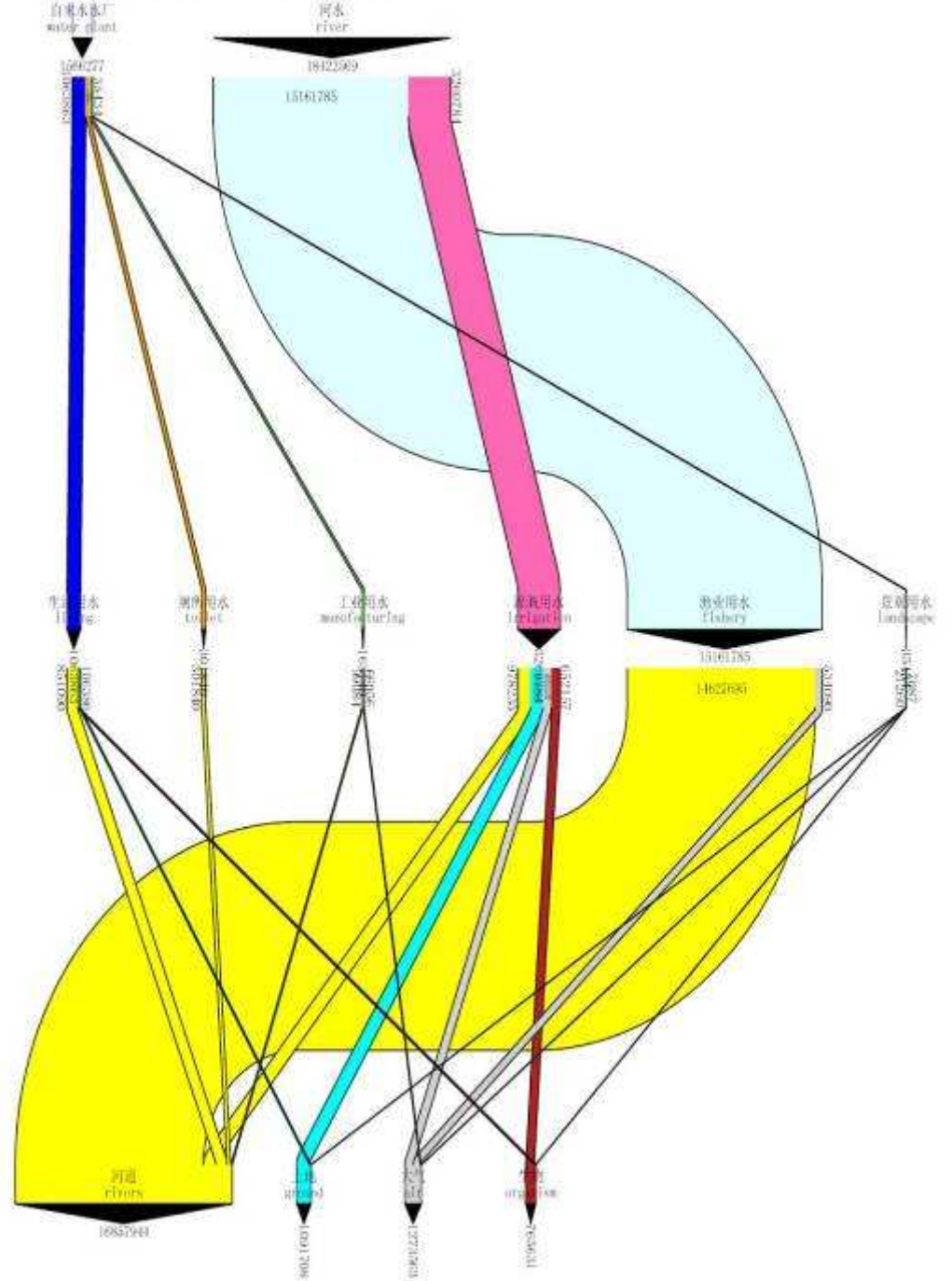
Energy Consumption in each parcel (kg/month)



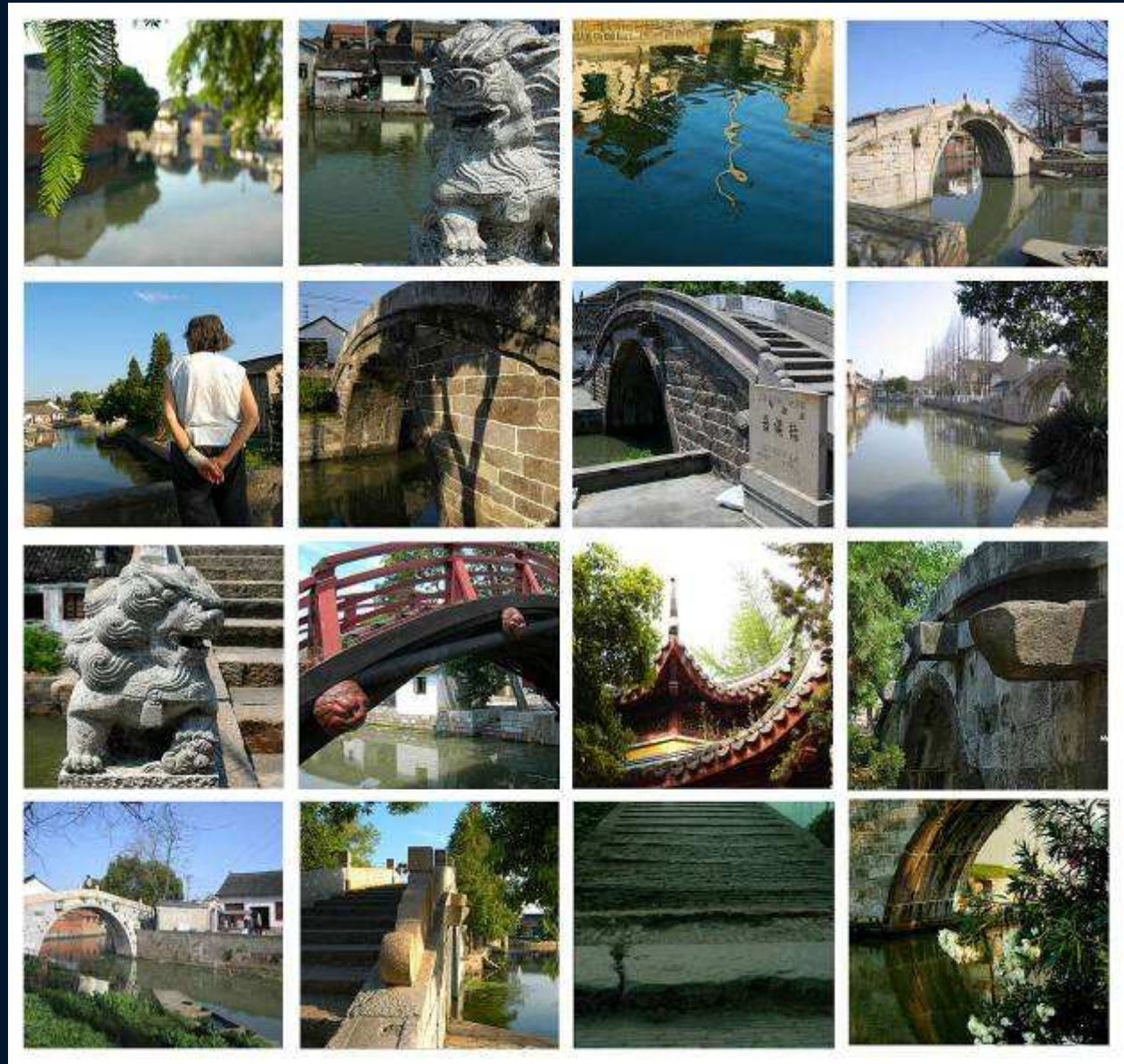
Energy Flow of whole district



Water Flow of Whole District



□The Bridge Town -- Jinze





Bridge

Bridge of Jinze
Bridging of the web

Background of shanghai

Background of jinze

- Strength** Long history
Nice environment
- Weakness** Control industry
Water container area
- Opportunity** EXPO2010
Entertainment economy
- Threats** Environment &
Transportation pollution

Image Symbol

Environment &
landscape value

Developing tourism

Existing energy analization

Concept of bridge

Catalyst project

Industry web

Bridge web

Future total energy prediction

System guideline

Spatial

Energy

Water usage

Population

Environment estimation

Scenario discription & comparision

Existing scenario

Short-term scenario

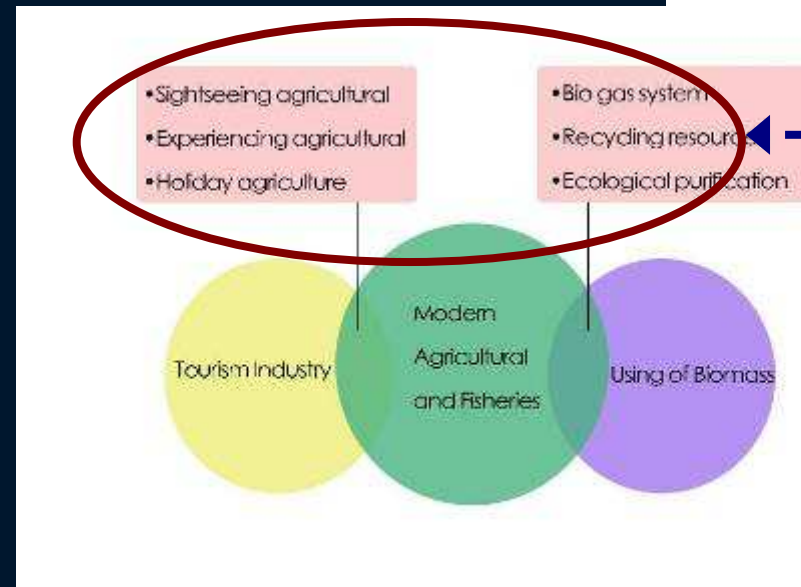
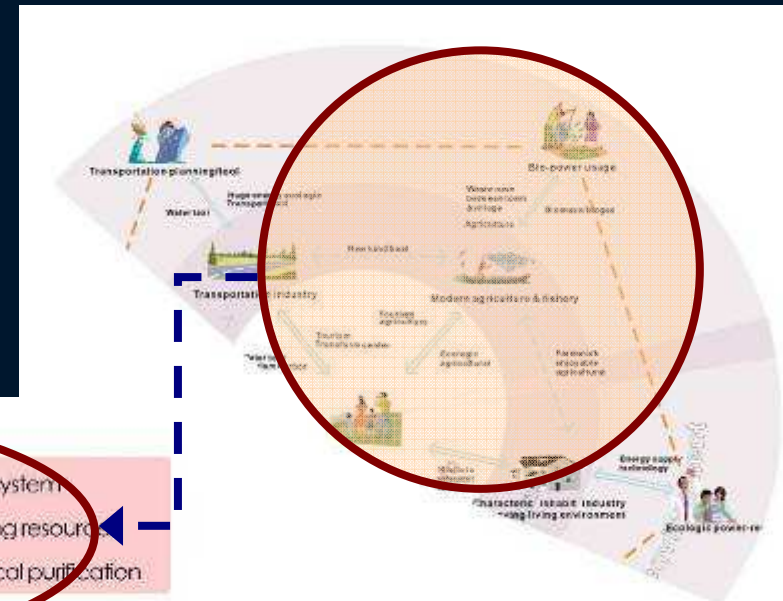
Long-term scenario

Conclusion

Result reexamination

Tourism ↔ Agricultural & Fishery industries

□ The connection between agriculture, fisheries and energy, environment

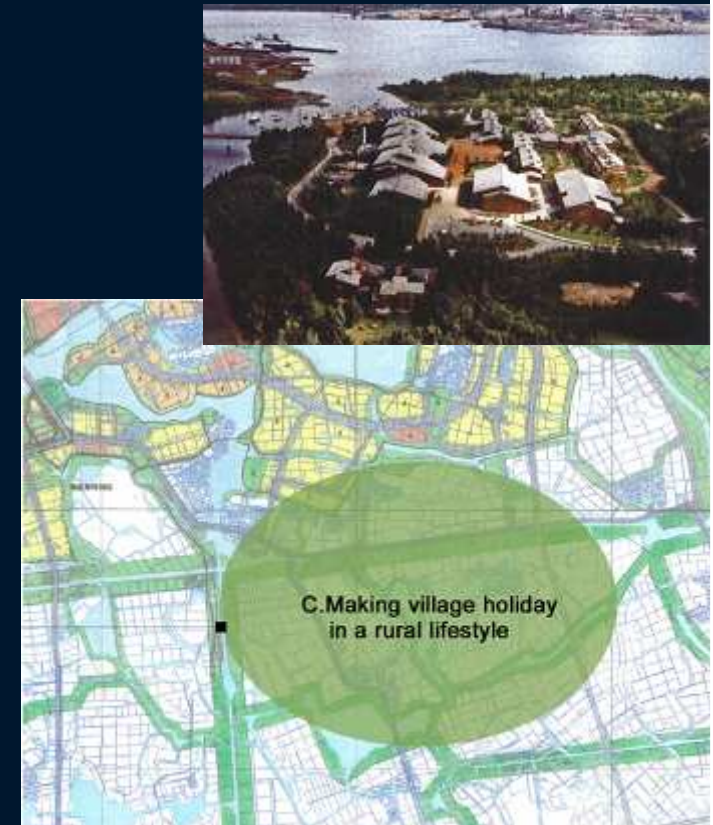
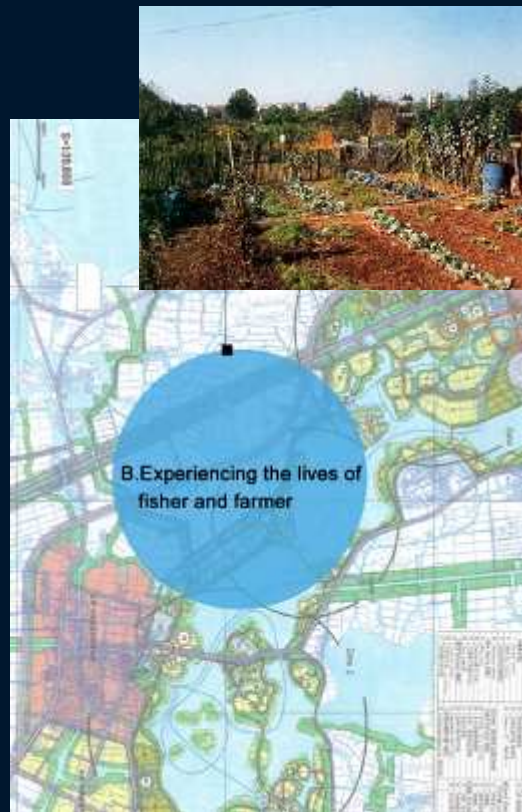
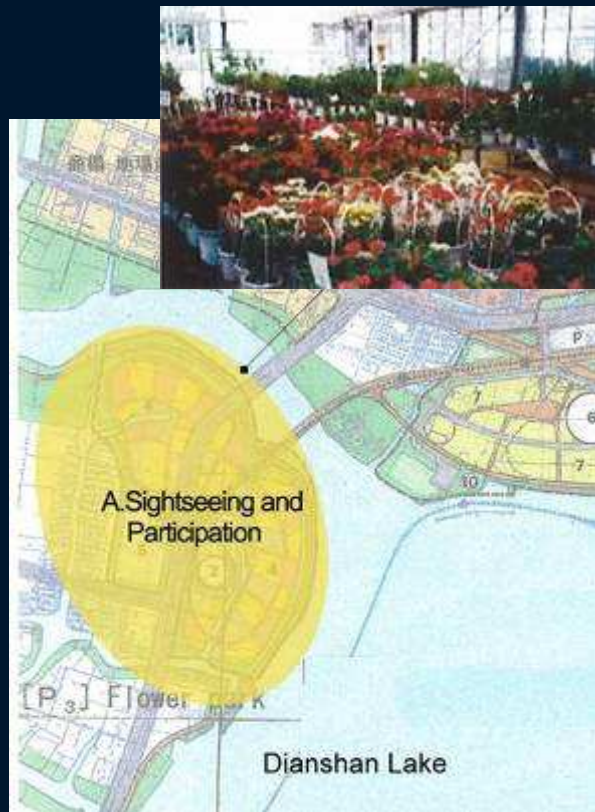


❑ Experiencing Agriculture

❑ Flower Park

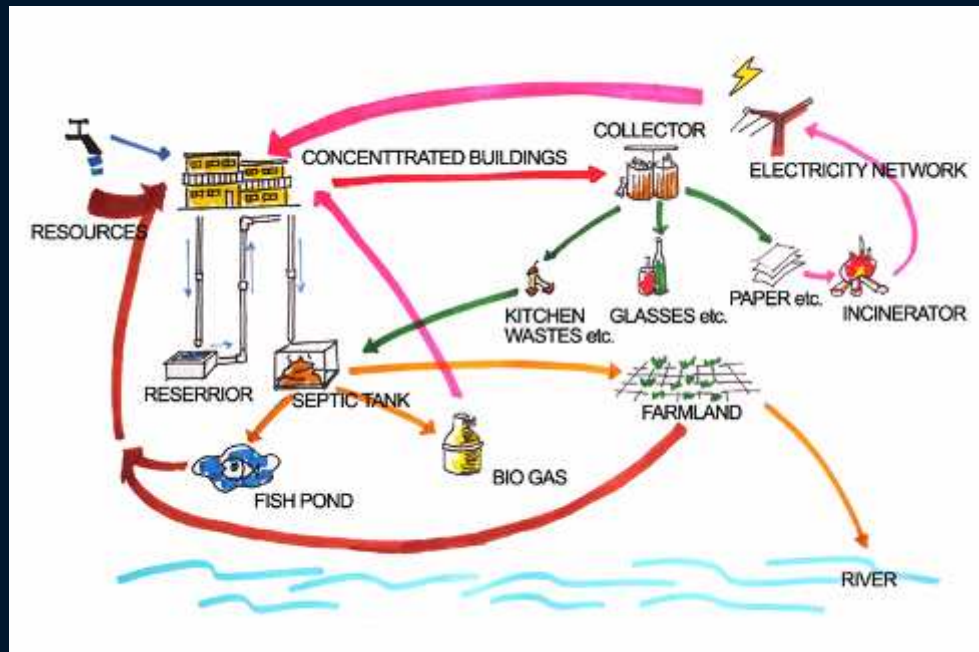
❑ Village Life

❑ Village Holiday

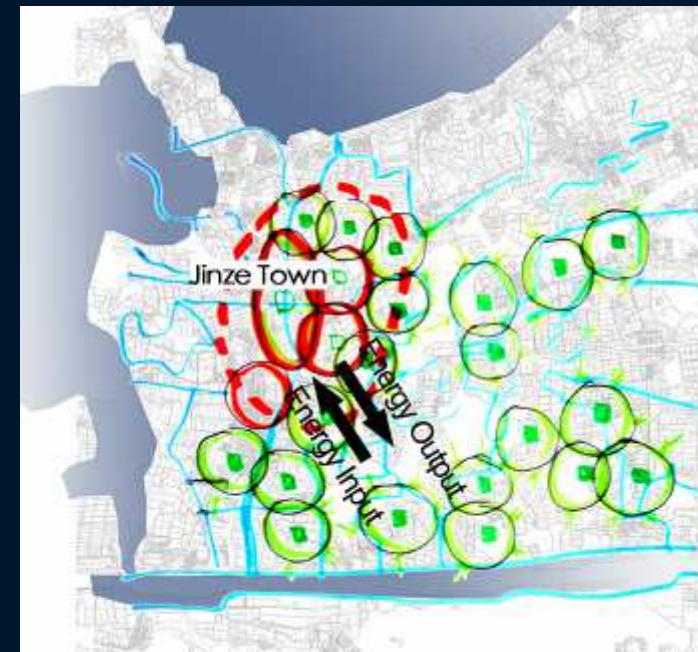


Recent Catalytic Projects

Energy Recycle in Township

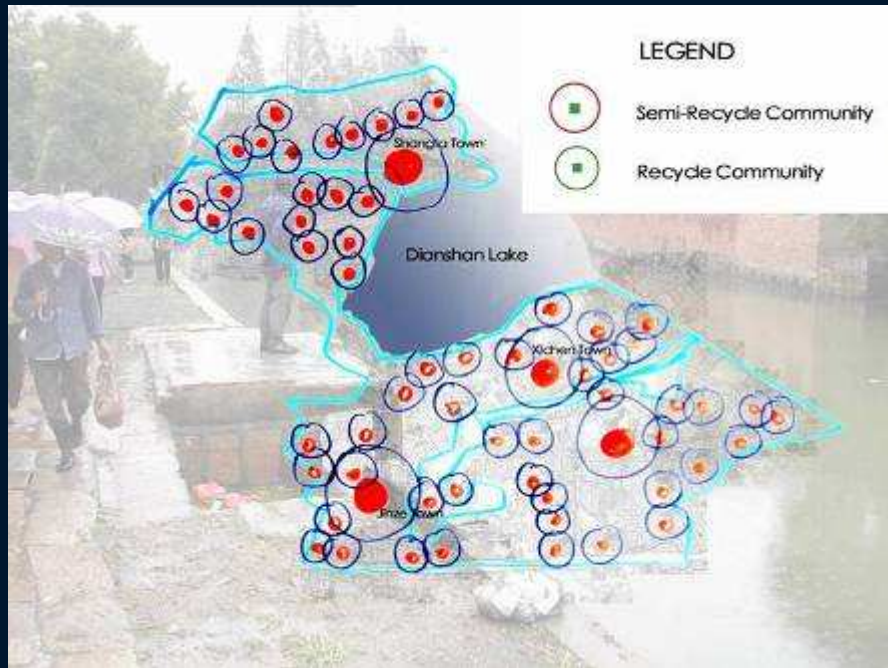


Energy Recycle in Township

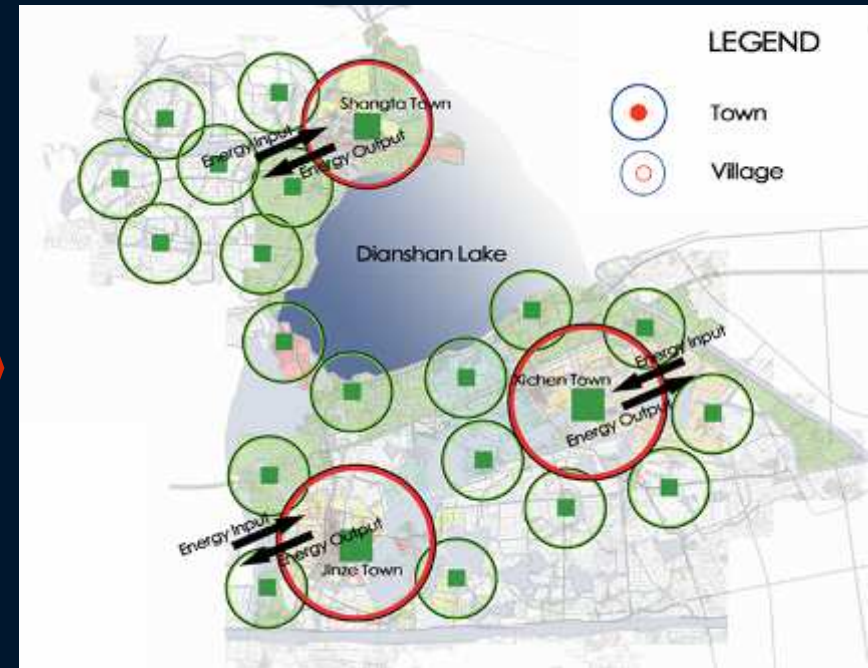


Recycling Town Structure

Future Catalytic Projects



Existing Community Structure



Circle Community

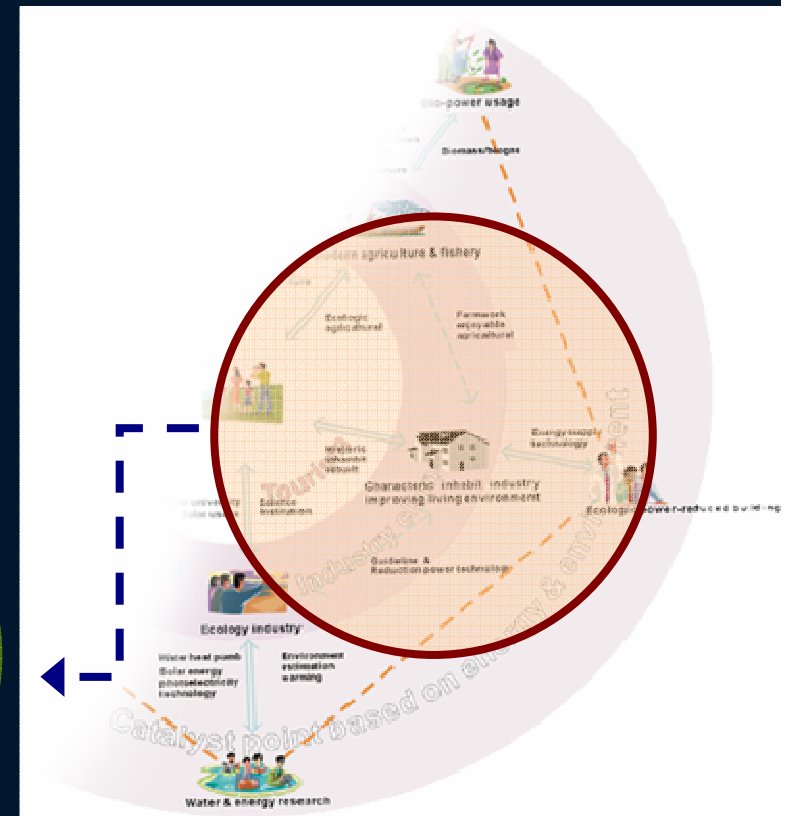
Tourism ↔ Characteristic inhabit industry

□ The connection between Tourism ↔ Characteristic inhabit industry

Tourism

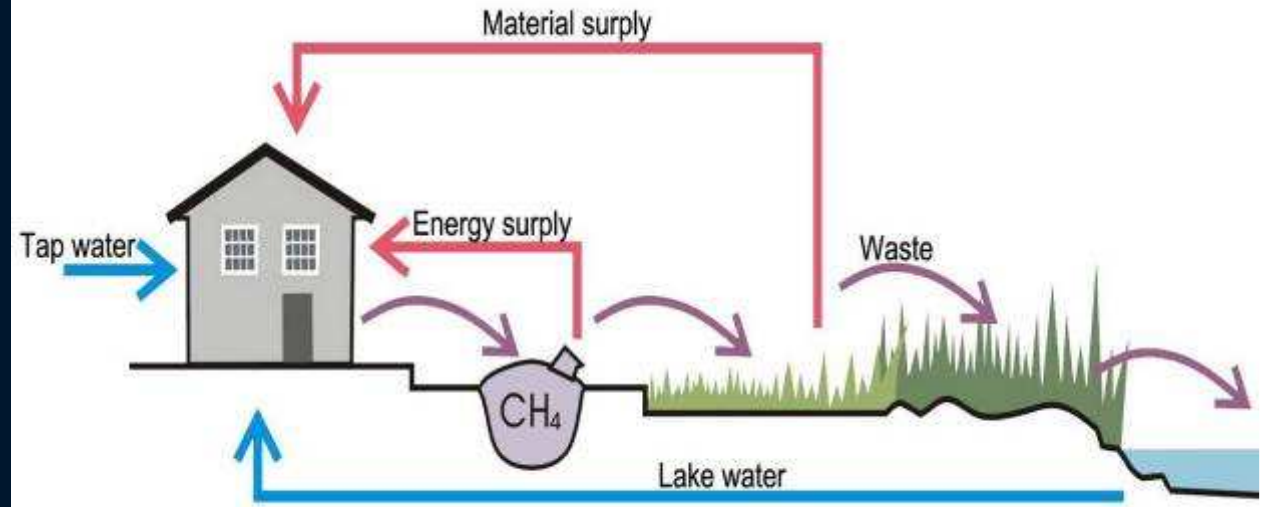
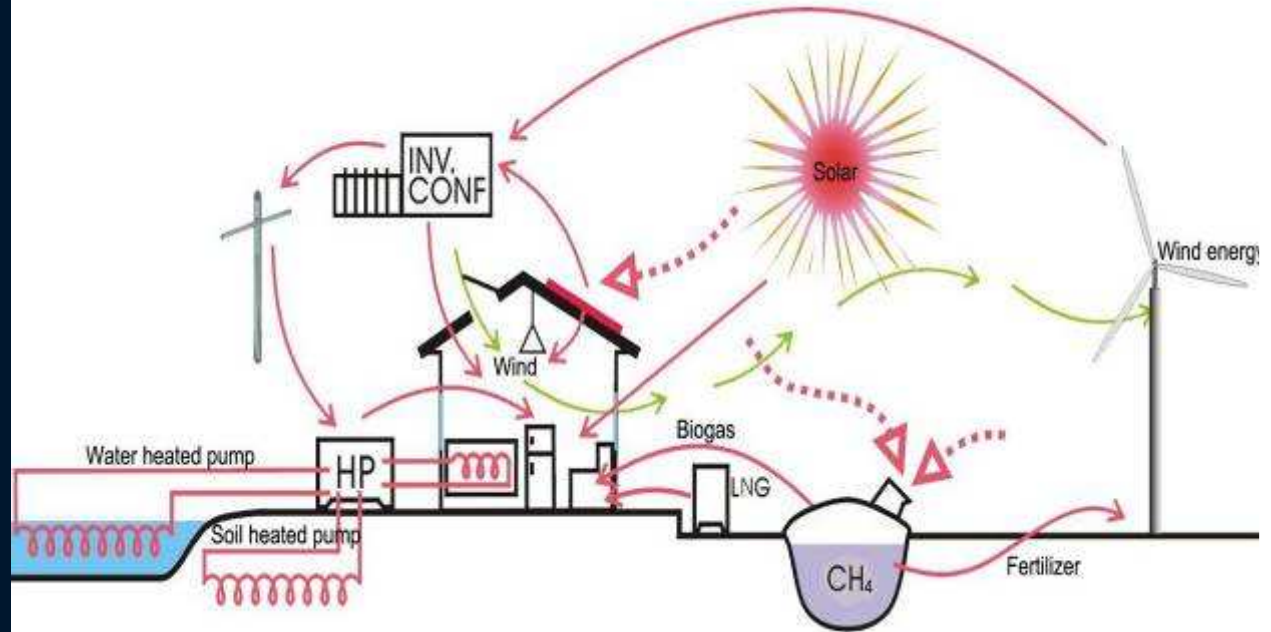
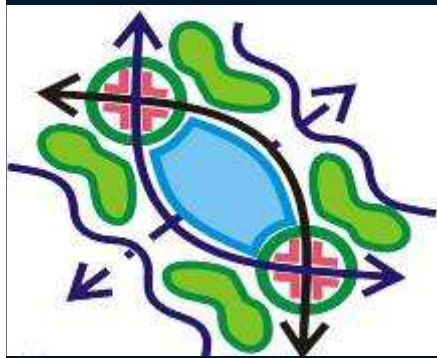
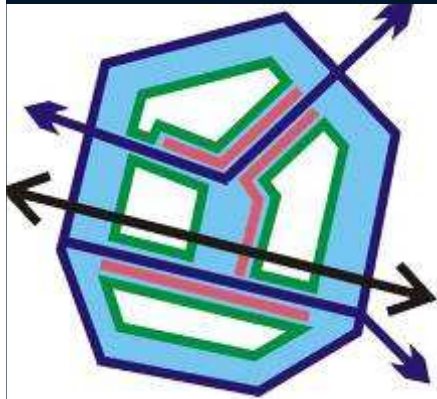
Characteristic inhabit

New typologies of building



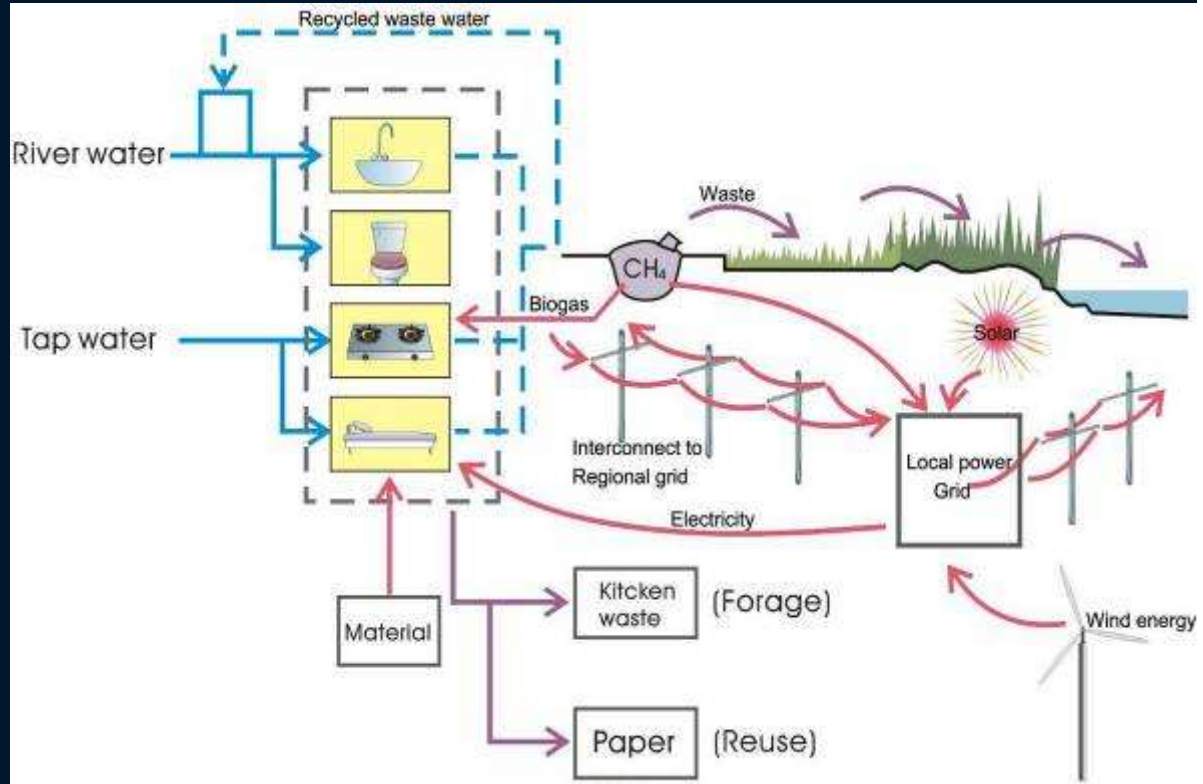
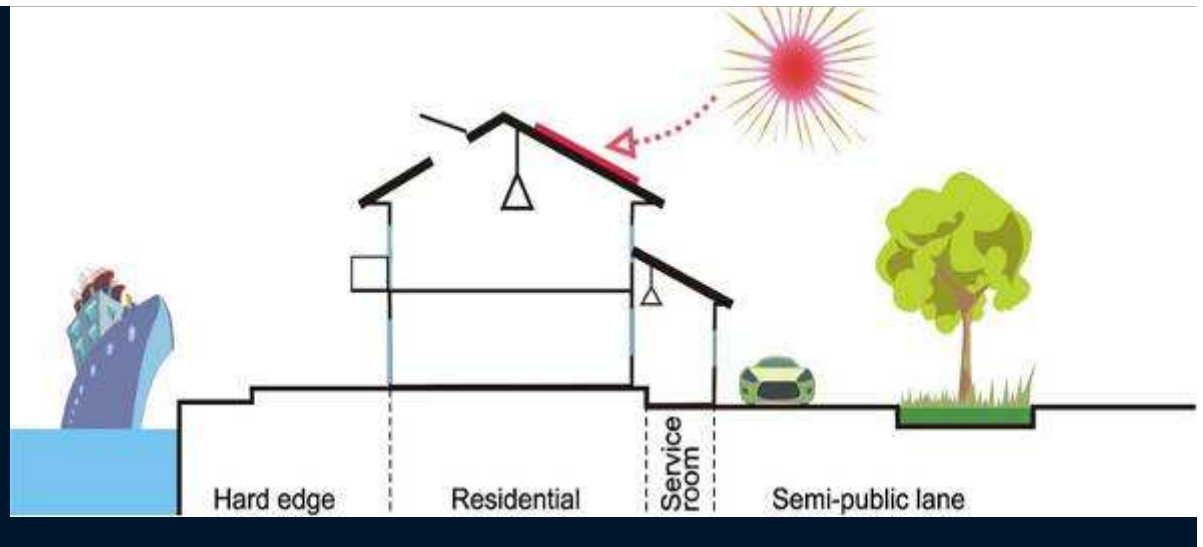
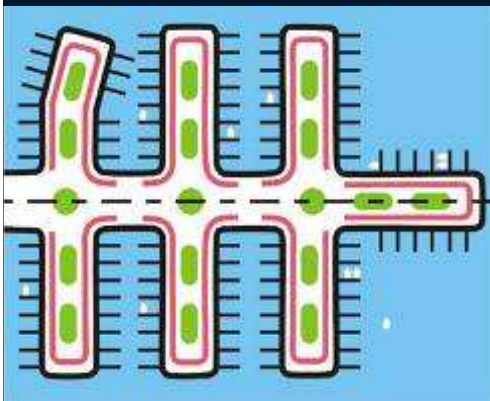
Three Design typologies:

2. Village residential



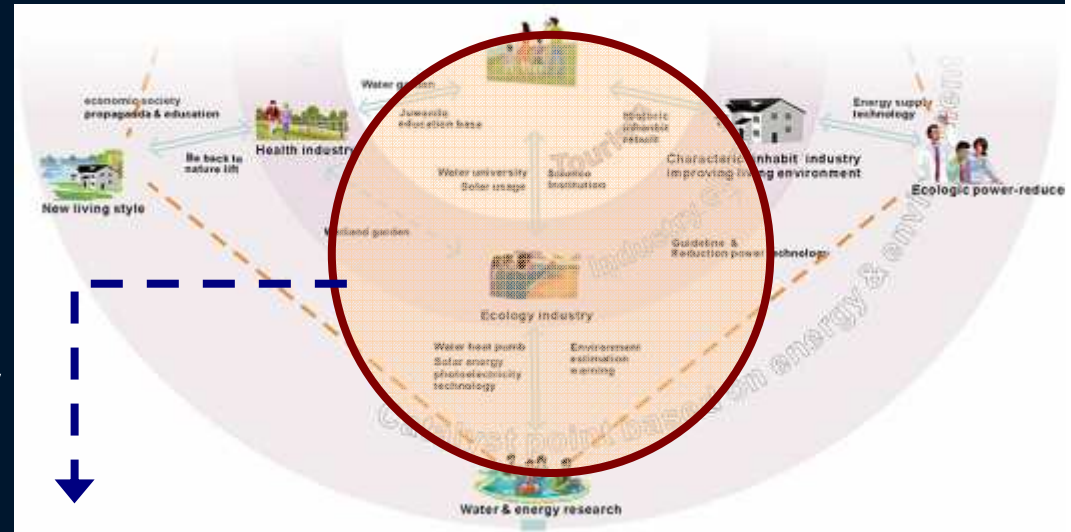
Three Design typologies: 3. Holiday buildings

- Buildings
- Lake
- Courtyard
- Road



Tourism ↔ Eco-functional Industry

□ The connection between Tourism ↔ Eco-functional Industry



□ Research Park

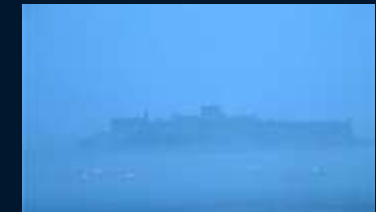


Position in JINZE



Natural island

Floating college



Maya civilization



Research park

□ Floating College



Landscape images



THANK YOU !

