



Will NG be in the house of tomorrow?

**IGU conference Roundtable
8th June 2006, Amsterdam**

**Bernd Utesch MBA
ASUE Association for the Efficient and
Environmentally Friendly Use of Energy
Kaiserslautern, Germany, www.asue.de**



Information about the ASUE

• Member Companies

41 German Gas Companies

- Gas Transmission Companies
- Regional Gas Distribution Companies
- Local Distribution Companies

• Working Groups

- Fuel Cells / Cogeneration
- Heat Supply Service
- Natural Gas and Environment
- Gas Turbine Technology
- Gas Heat Pumps / Cooling
- Residential Applications



First group: Appliance manufacturers and developers Gas-Heatpumps (multi-split) in Germany



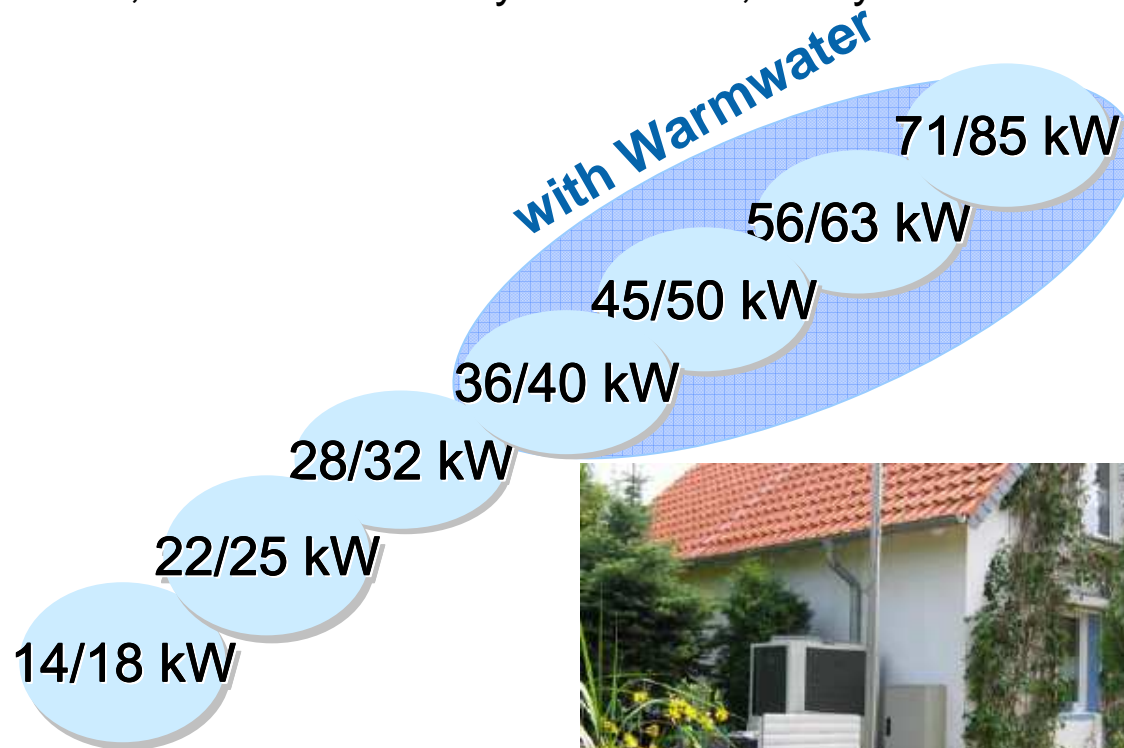
GHP (multi-split) available in Germany:
Aisin, Mitsubishi Heavy Industries, Sanyo



GHP



GHP-Watersystem





Micro-CHP: different technologies

- based on:
- **Gas engine**
 - **Stirling engine**
 - **Steamexpansion**
 - **Fuel cells**

Honda,
Japan



OTAG,
Germany



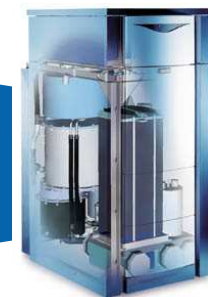
Whispergen
New Zealand



MicroGen **and others**



Fuel cells





Natural gas + Biogas



2 Nm³/h Biogas

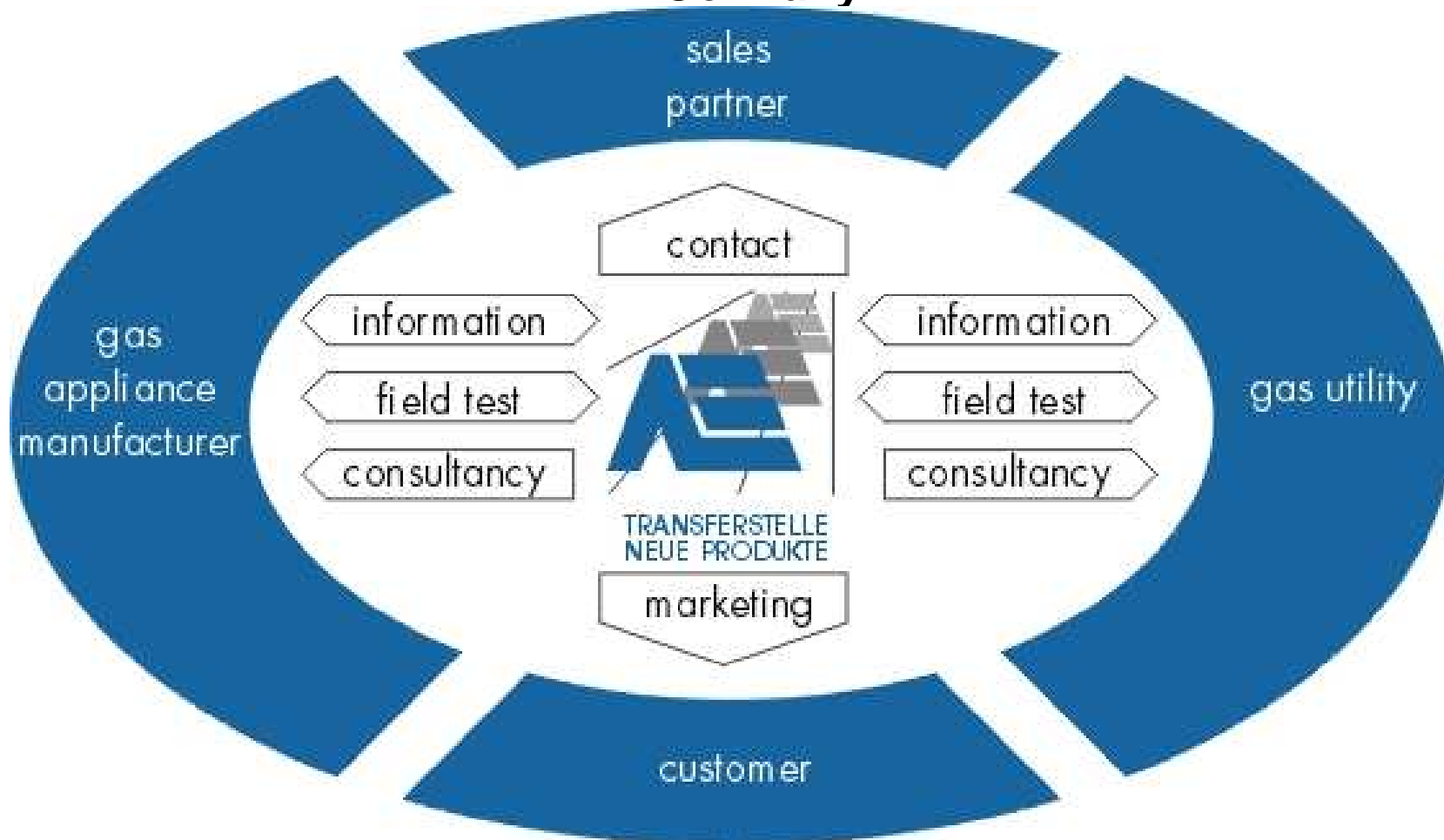
Braunschweig / Germany

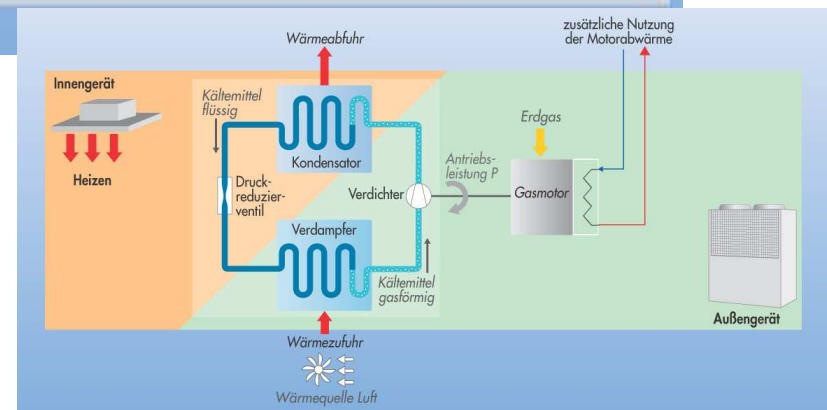
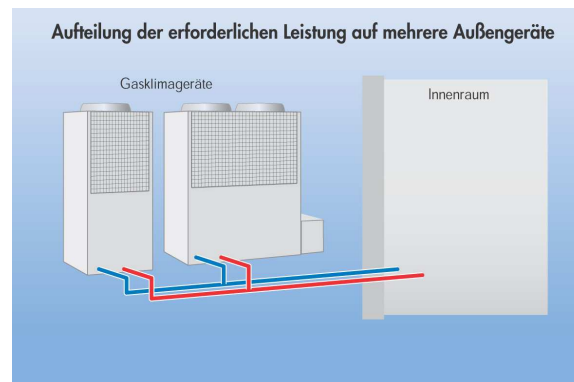
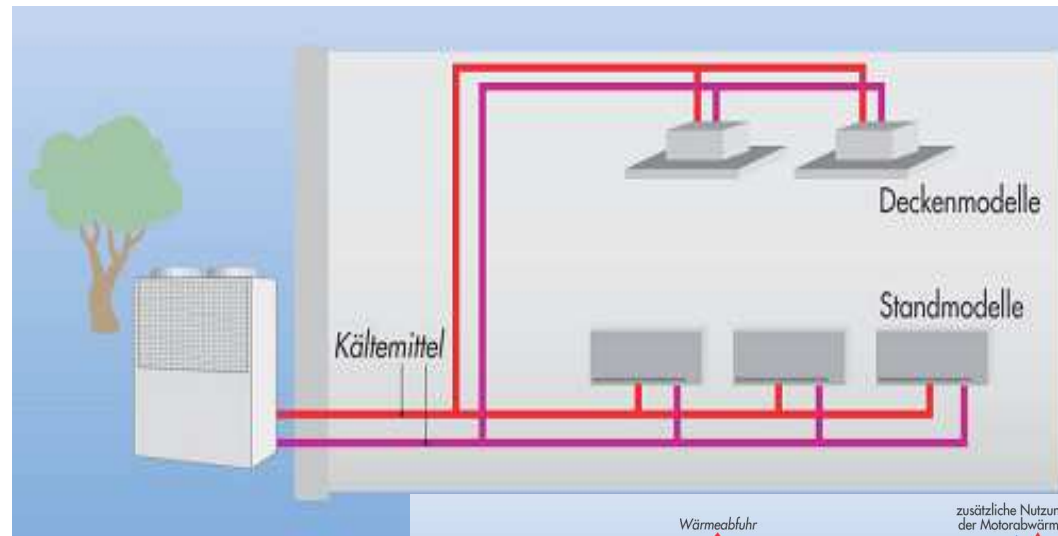


How should R&D costs and the cost of innovation management for new appliances should be shared in future?



Central Contact and Coordination Agency for New Gas Applications in Germany







ASUE

Bismarckstraße 16

D-67655 Kaiserslautern

Tel.: +49 (0) 631 360 90 70

info@asue.de

www.asue.de

ASUE-

Transfer Agency for New Products

Postfach 10 10 16

D-45001 Essen

Tel.: +49 (0) 201 27 95 700

transferstelle@asue.de

www.transferstelle.info