

25th world gas conference  
“Gas: Sustaining Future Global Growth”

# Innovation & Partnership in Major Gas Projects

Achieving transformation in delivering energy to markets

By: John Gallagher, EVP, Shell

Date: 7 June 2012

Venue: Level 3 - Plenary Theatre



Patron



Host



Host Sponsor



## PEARL GTL

- World's largest GTL plant
- 140,000 bbl/d GTL products +120,000 bbl/d NGLs
- 52,000 construction workers



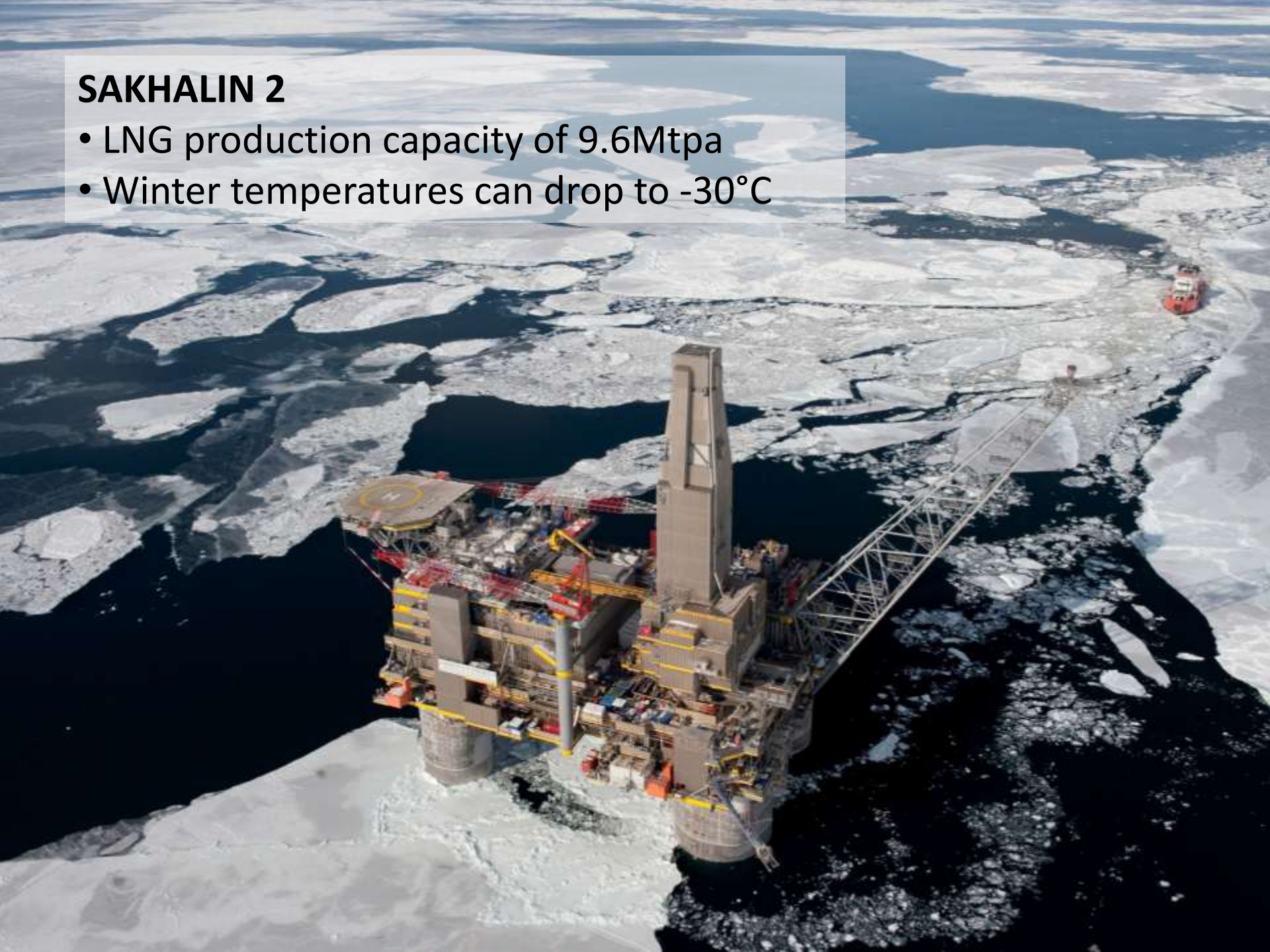
## Shell and Qatar Petroleum

- Similar value drivers & appetite for risk
- Owners gave management the freedom to run



## SAKHALIN 2

- LNG production capacity of 9.6Mtpa
- Winter temperatures can drop to  $-30^{\circ}\text{C}$



## **Shell, Gazprom, Mitsui & Mitsubishi**

- Complimentary technical strengths
- Complementary market knowledge & ability to extend supply chains



## FLOATING LNG

- Radical new approach to offshore gas development
- The largest offshore floating facility in the world
  - a par 5 golf hole !



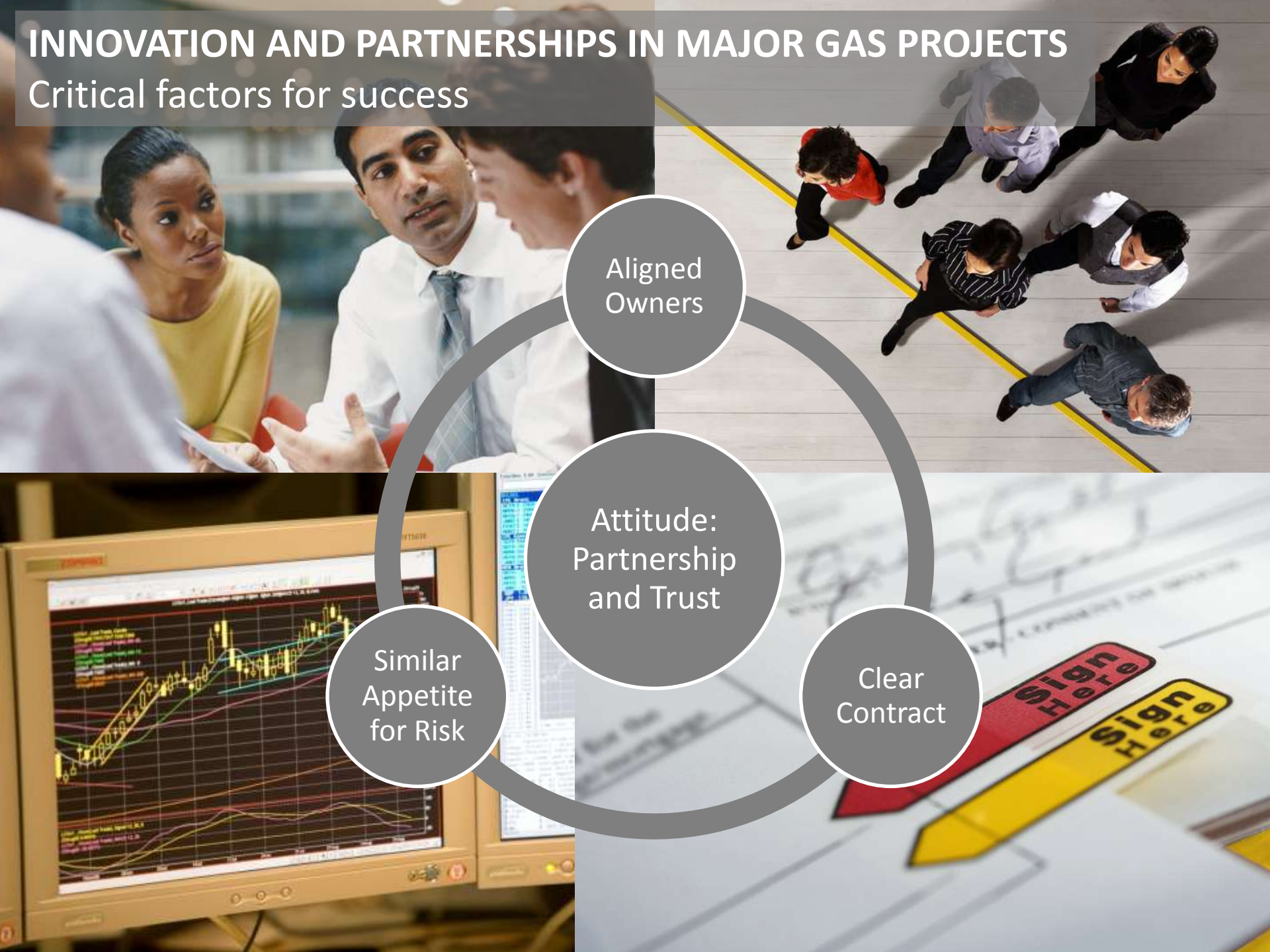


## **Shell, Technip, SBM and Samsung**

- Complementary skills & a clear contract
- A joint appetite for new technology

# INNOVATION AND PARTNERSHIPS IN MAJOR GAS PROJECTS

Critical factors for success



Aligned  
Owners

Attitude:  
Partnership  
and Trust

Similar  
Appetite  
for Risk

Clear  
Contract



