

Design of a compressor station in and cross border situation is a challenging business

By: Ad Pijnacker Hordijk, Gasunie

Date: 5th of June 2012

Venue: Kuala Lumpur



Patron



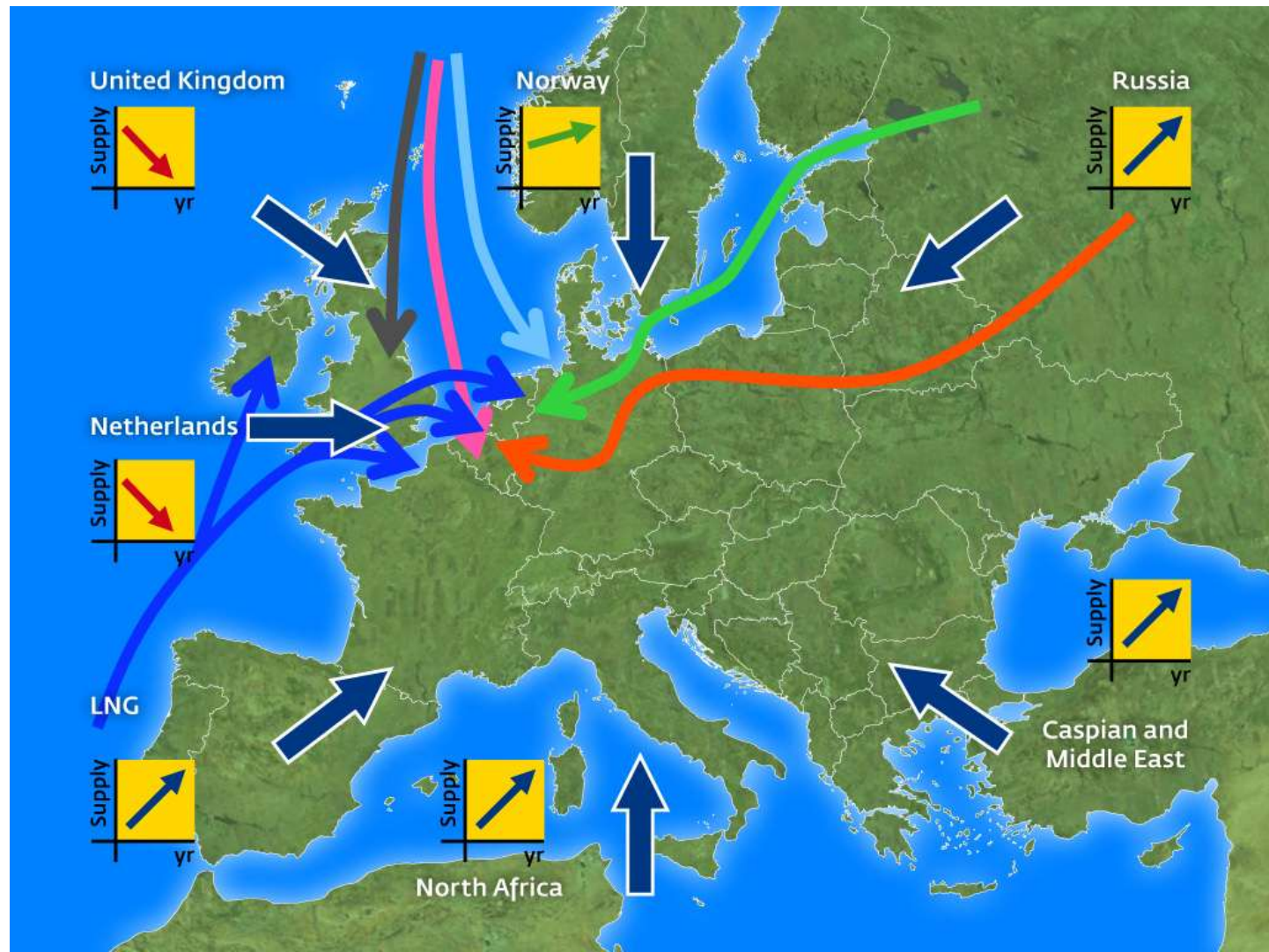
Host



Host Sponsor



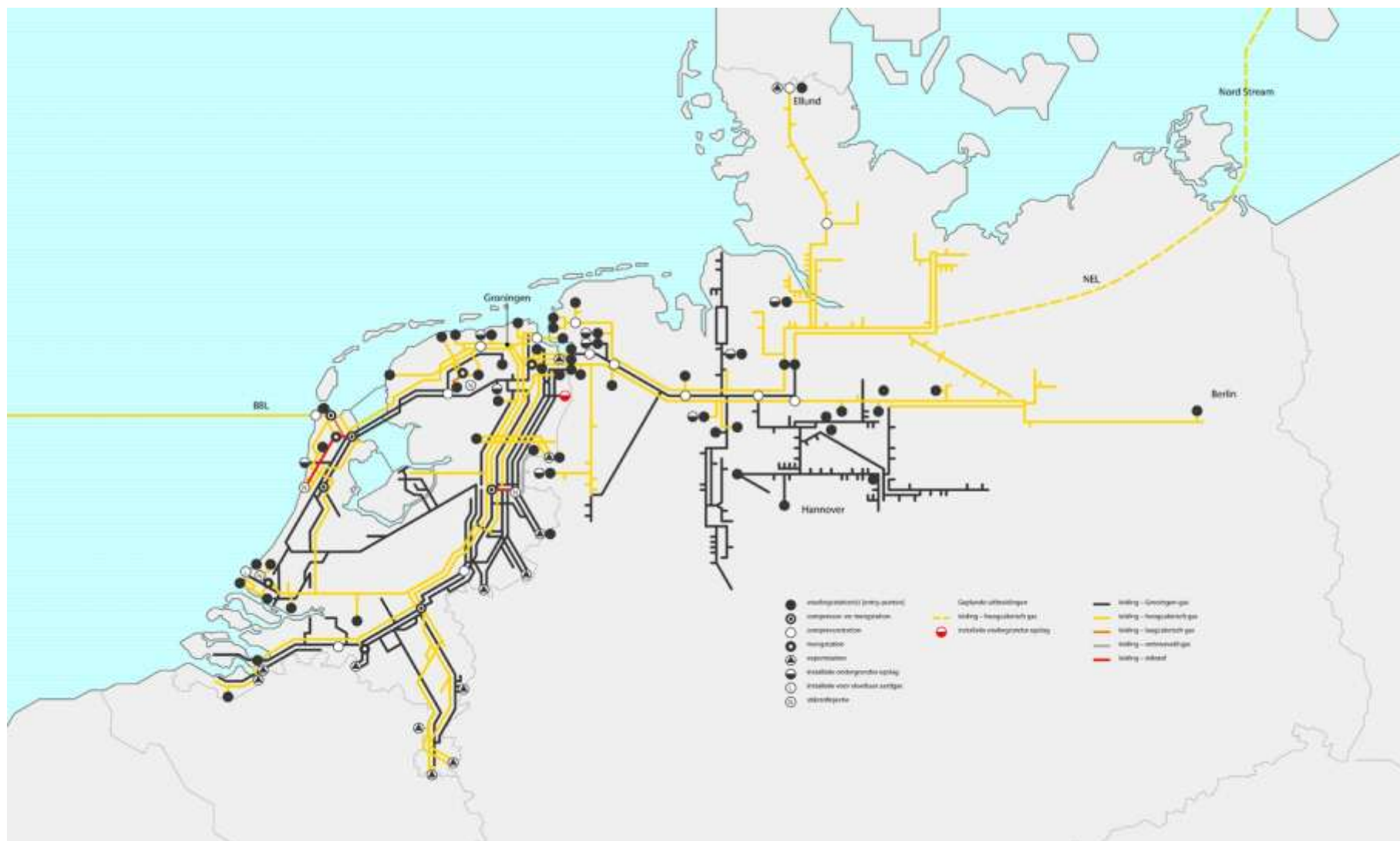
Background Crossborder gas transportation



Background Gas Roundabout



Background Network Gasunie



Overzichtskaat (totale scope) Noord-Zuid projecten

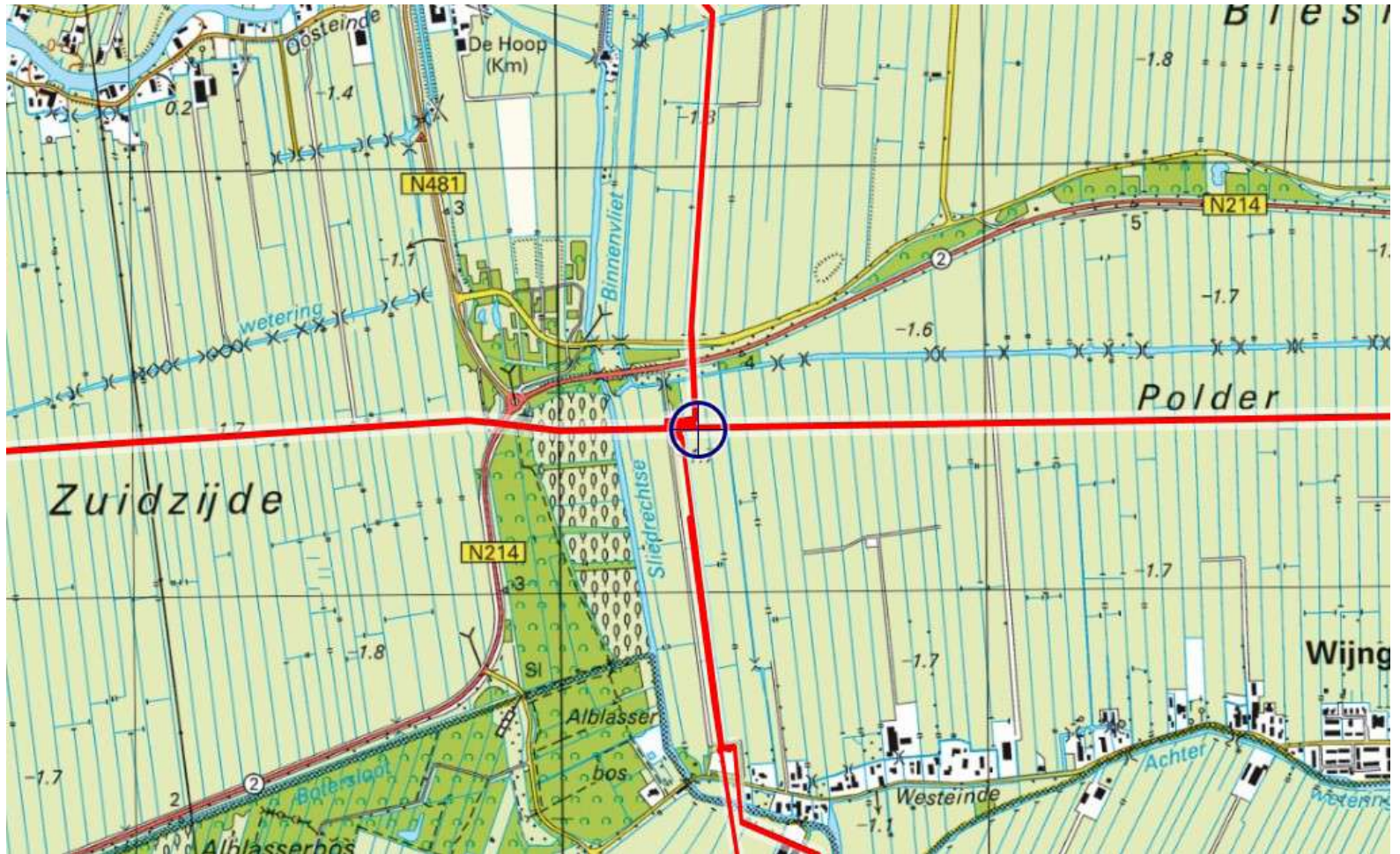
- Goedgekeurde scope N-Z projecten
- Nog niet goedgekeurde scope N-Z projecten



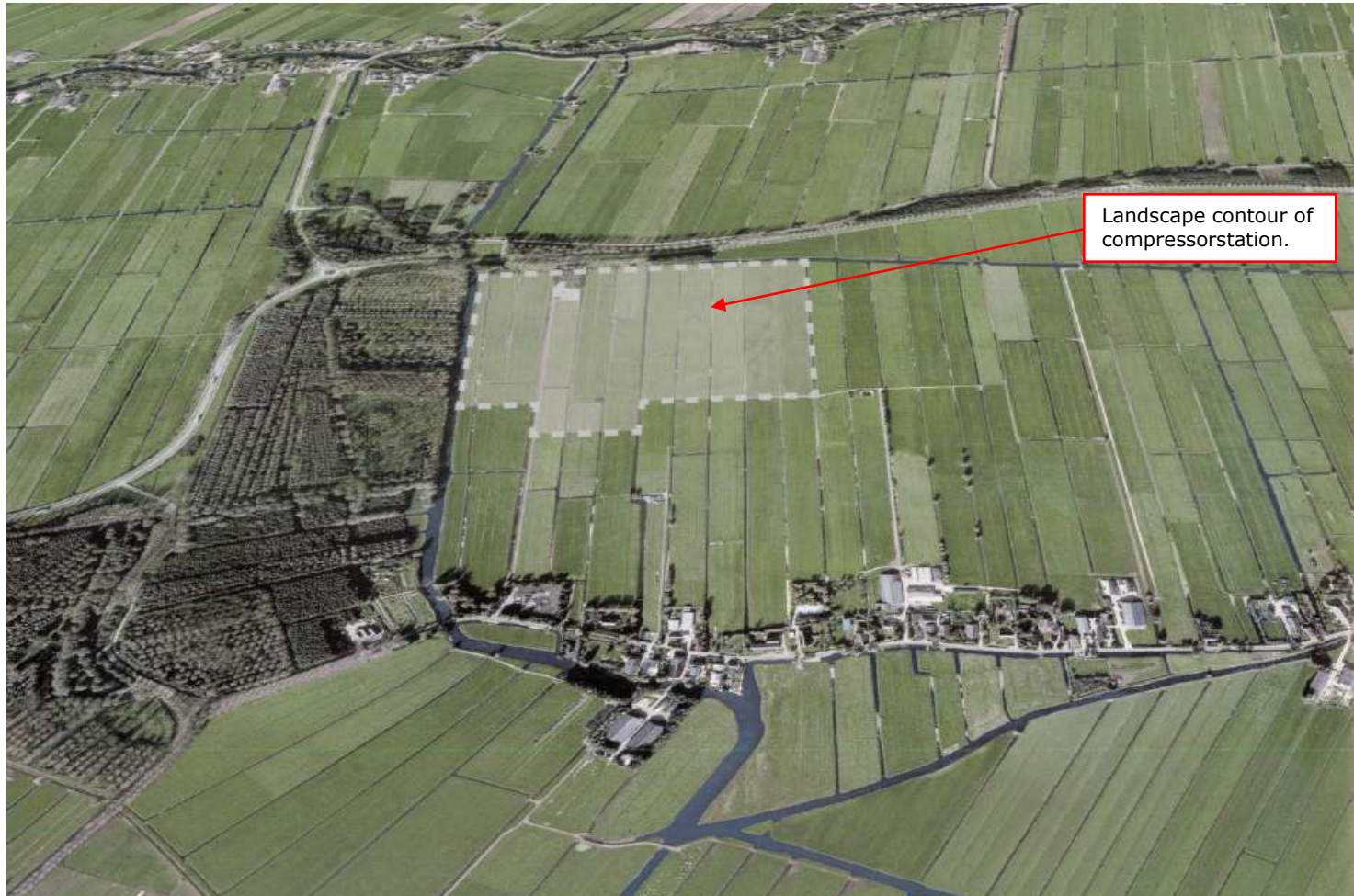
tscope



Location Wijngaarden



Location Wijngaarden



Location Wijngaarden

Landscape : 12 ha
Compressorstation : 9 ha



Location Wijngaarden



Location Wijngaarden

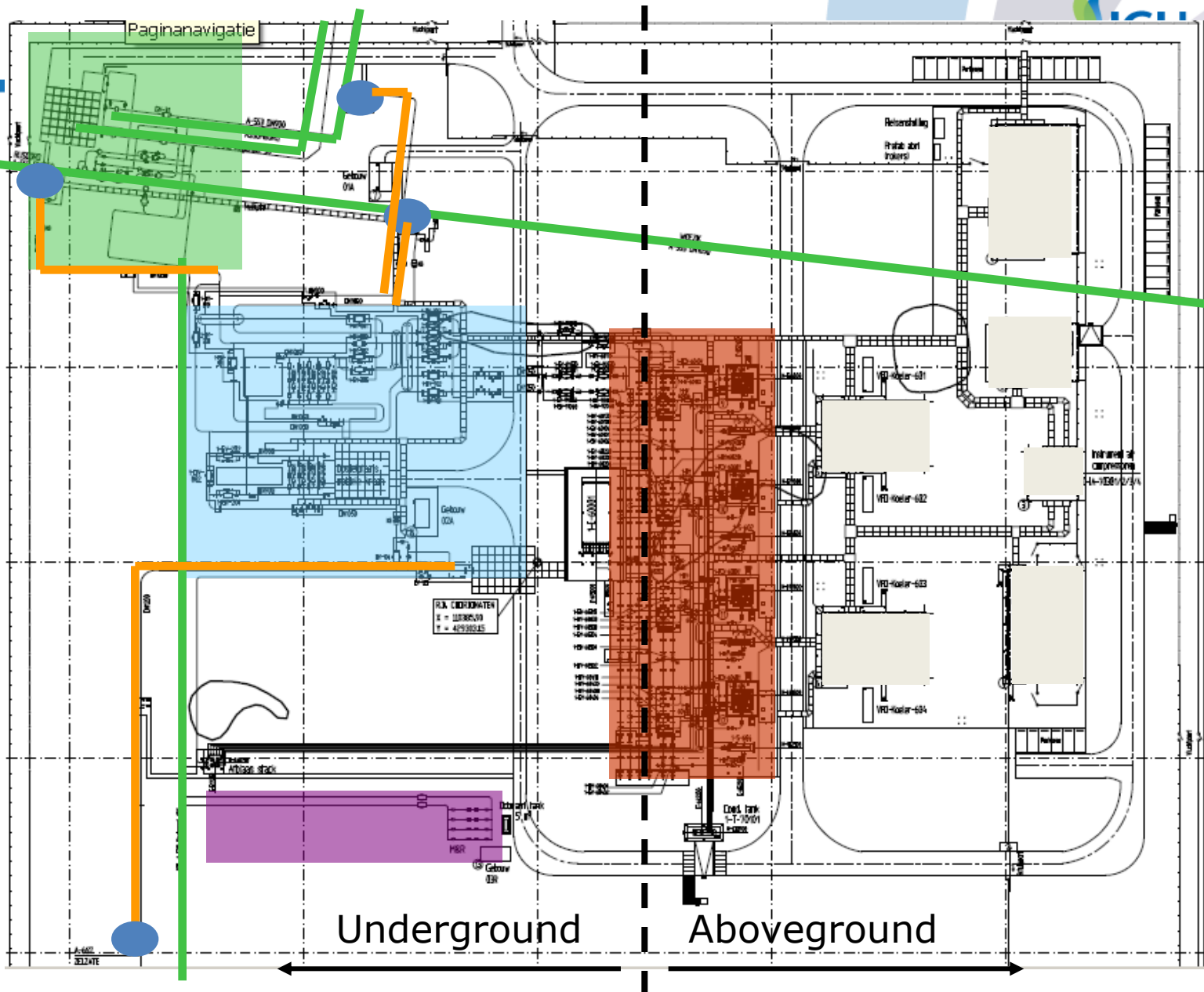


(c)cees@schilthuizen.nl

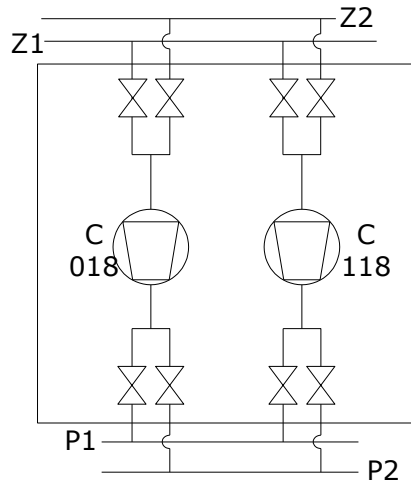
Method Location CS Wijngaarden



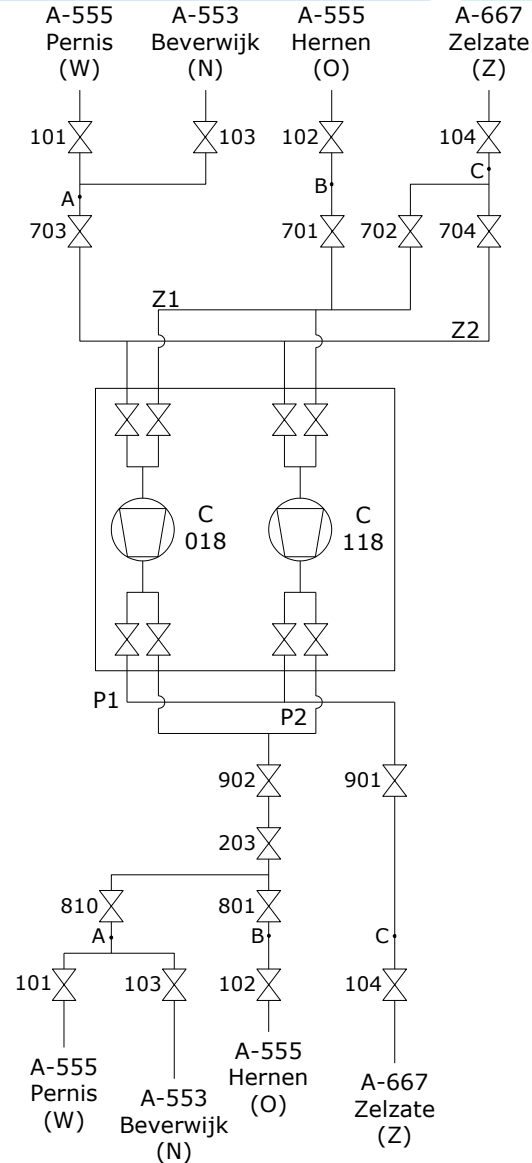
KUALA LUMPUR
2012
WORLD GAS CONFERENCE



Method CS Wijngaarden

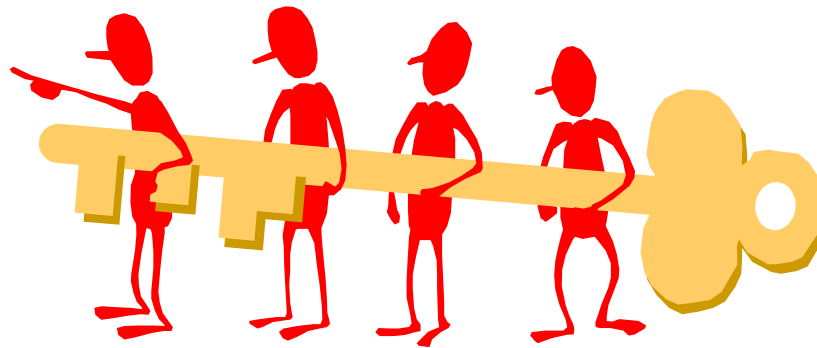


#	C-018	C-118	
1	Z1.P1	Z2.P2	= Z1.P1+Z2.P2
2	Z1.P2	Z2.P1	= Z1.P2+Z2.P1
3	Z1.P1	Z1.P2	= Z1.(P1+.P2)
4	Z2.P1	Z2.P2	= Z2.(P1+.P2)
5	Z1.P1	Z2.P1	= (Z1+Z2).P1
6	Z1.P2	Z2.P2	= (Z1+Z2).P2



Conclusions CS Wijngaarden

- New compressor station with great transport possibilities
- Needs a lot of harmonisation between local operators and CCP dispatchers
- Successful project execution
- Every one worked as member of the TEAM



Together Everyone Achieves More
Teamwork is the key of success !

WGC 2012 paper 666

Questions

