



25th world gas conference
"Gas: Sustaining Future Global Growth"

Review of Safety Management Strategies and Practices

Study group Report WOC4.1

Ben Lambregts, The Netherlands

Tuesday 5th June



Patron



Host

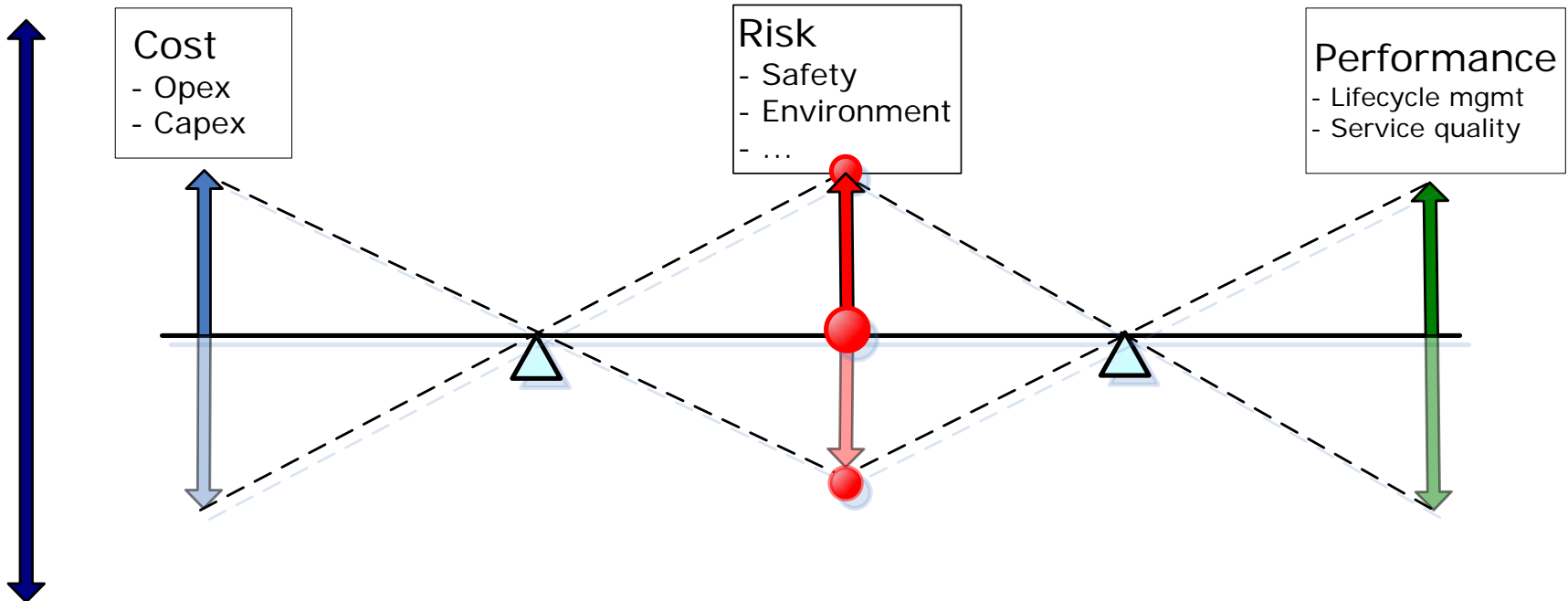


Host Sponsor



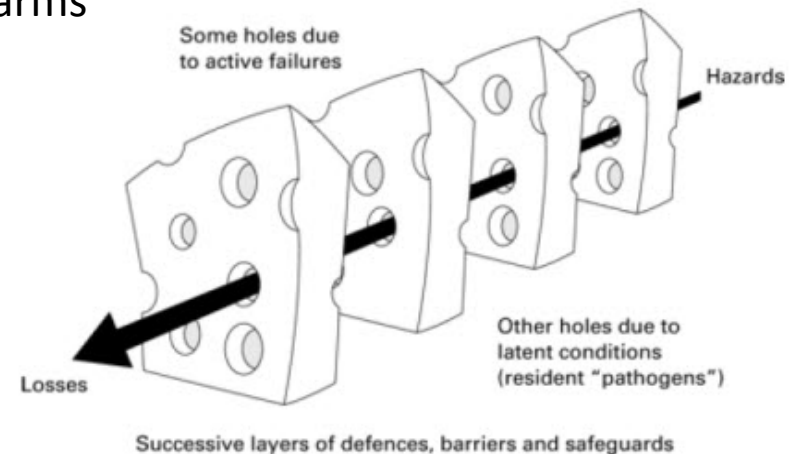
Introduction

- Increasing interest from society
- Balancing Risks , Cost and Performance



Process Safety

- **Process safety leadership**
- Design and modifications
- Operating procedures
- **Workforce competence**
- **Human factors**
- **Emergency arrangements**
- Protective devices, instrumentation and alarms
- **Inspection and maintenance**
- Permit to work
- Asset records and data quality
- Third party activities
- **Audit, review**



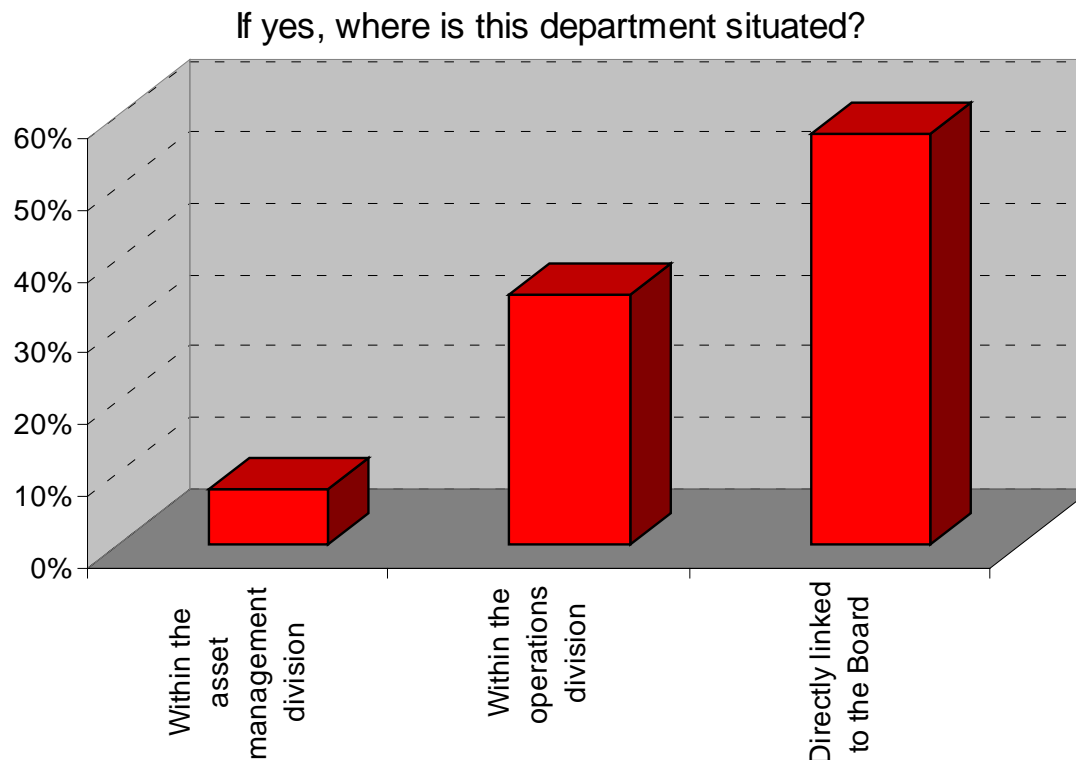
Swiss cheese model by James Reason published in 2000.

Questions

- Major actors and the supporting organisation
- Level and way of communication
- Most important KPI's

Safety as a Priority

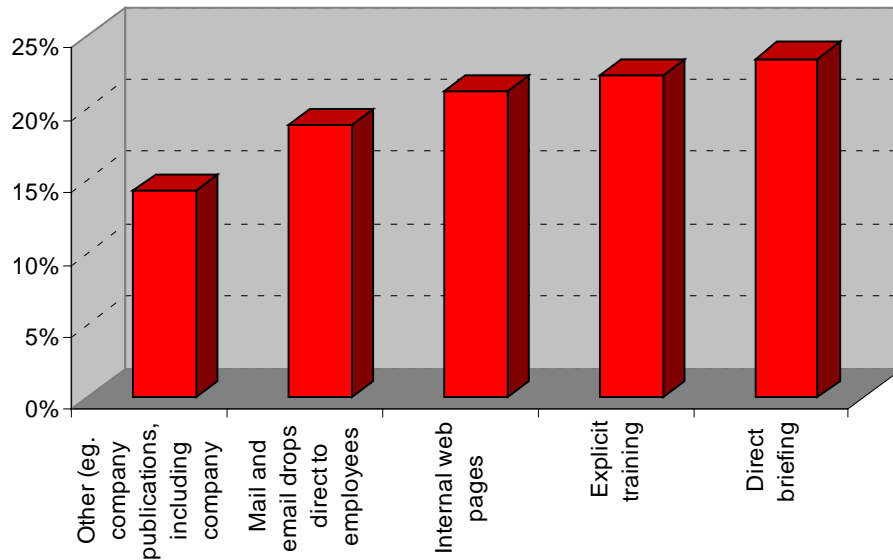
- 75% of all companies sign off and approve the approach to Process Safety at the most senior levels
- Over 80% has a separate Safety Department



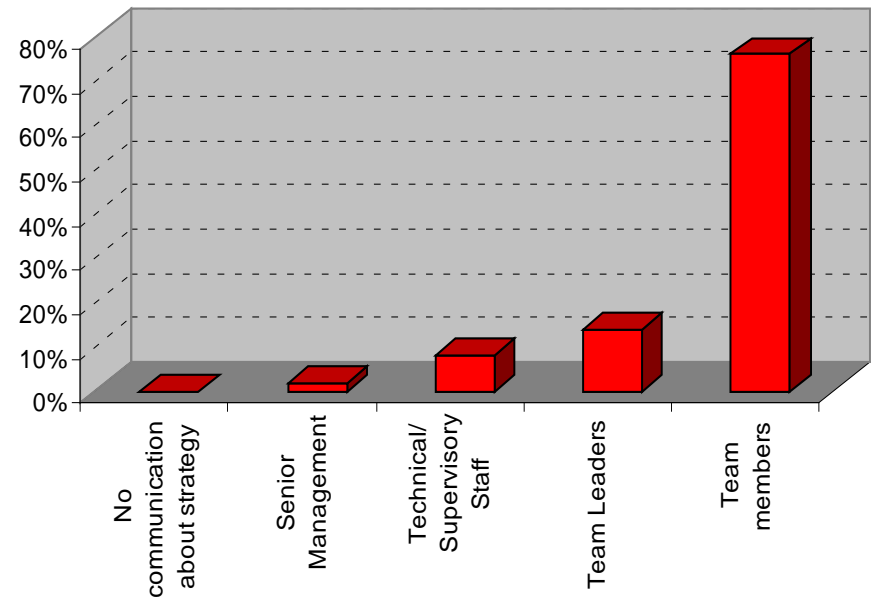
Safety Communication

- 86% of all contractors and sub-contractors are included in communication

What methods of communication are used?



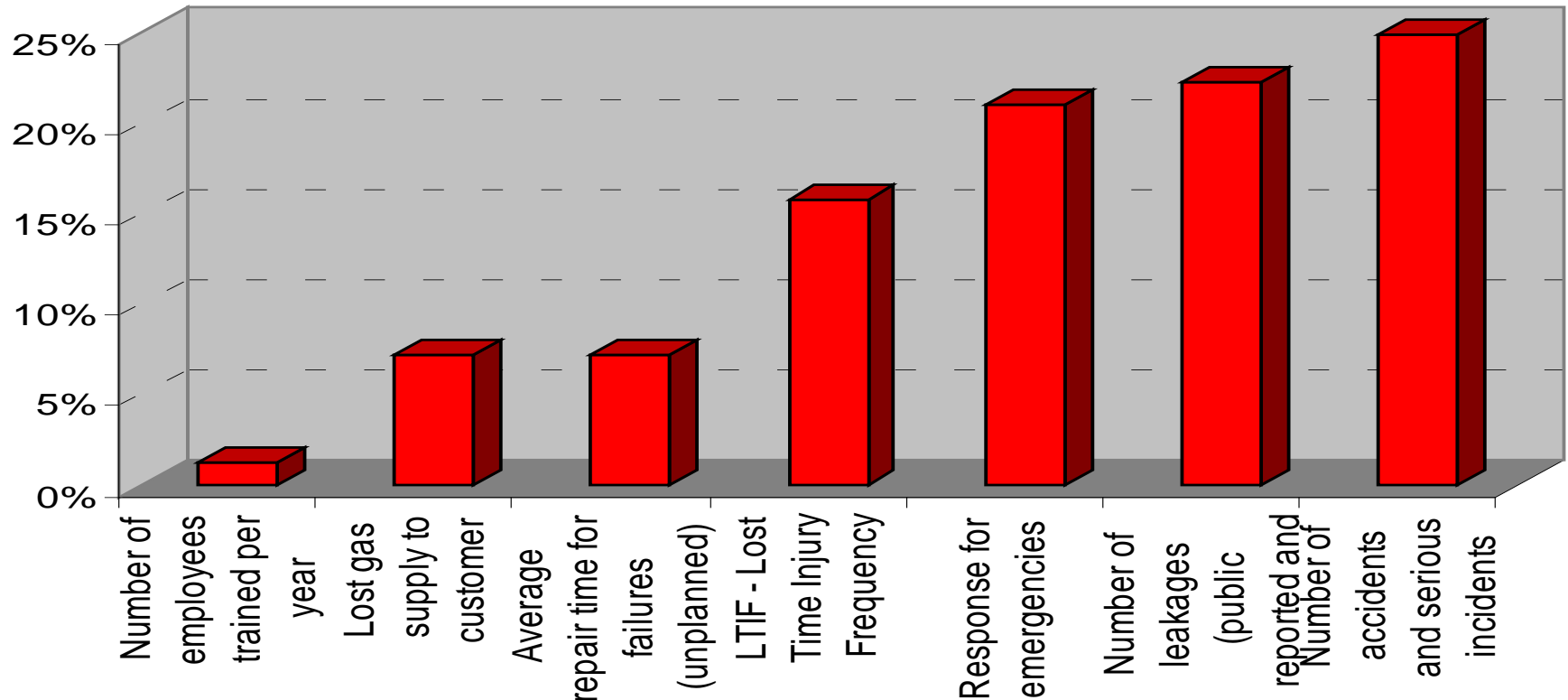
How far down the organisation is the safety strategy communicated?



Safety KPI's

- Almost 50% of companies have a reward/remuneration policy linked to safety performance.

Which KPI's are the most important within your company?



Conclusions and recommendations

- Safety is a number one priority
- Top 3 KPI's are lagging indicators
- A number of KPI's are personal targets for managing directors
- Evaluate and bring balance in indicators
- Be accurate and reserved with personal indicators

Human Factor and Competence

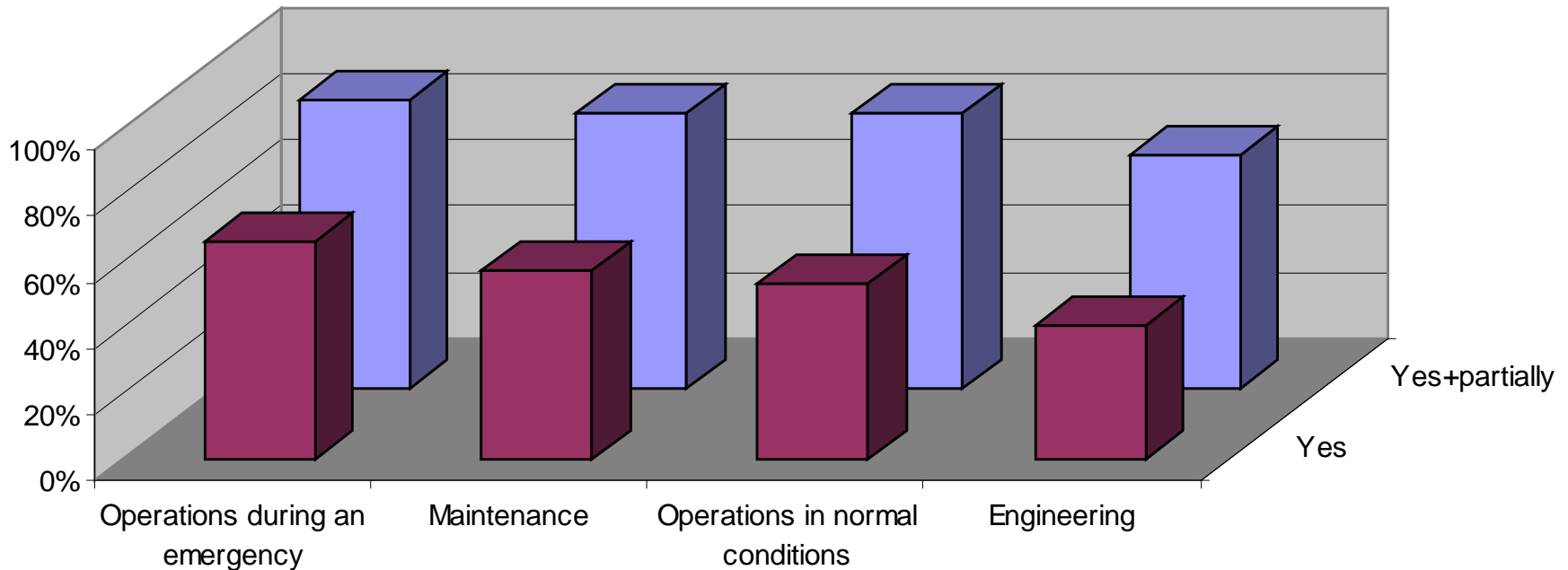
Questions

- Phases of activities
- Most effective KPI's
- Training technologies
- How do we secure competence

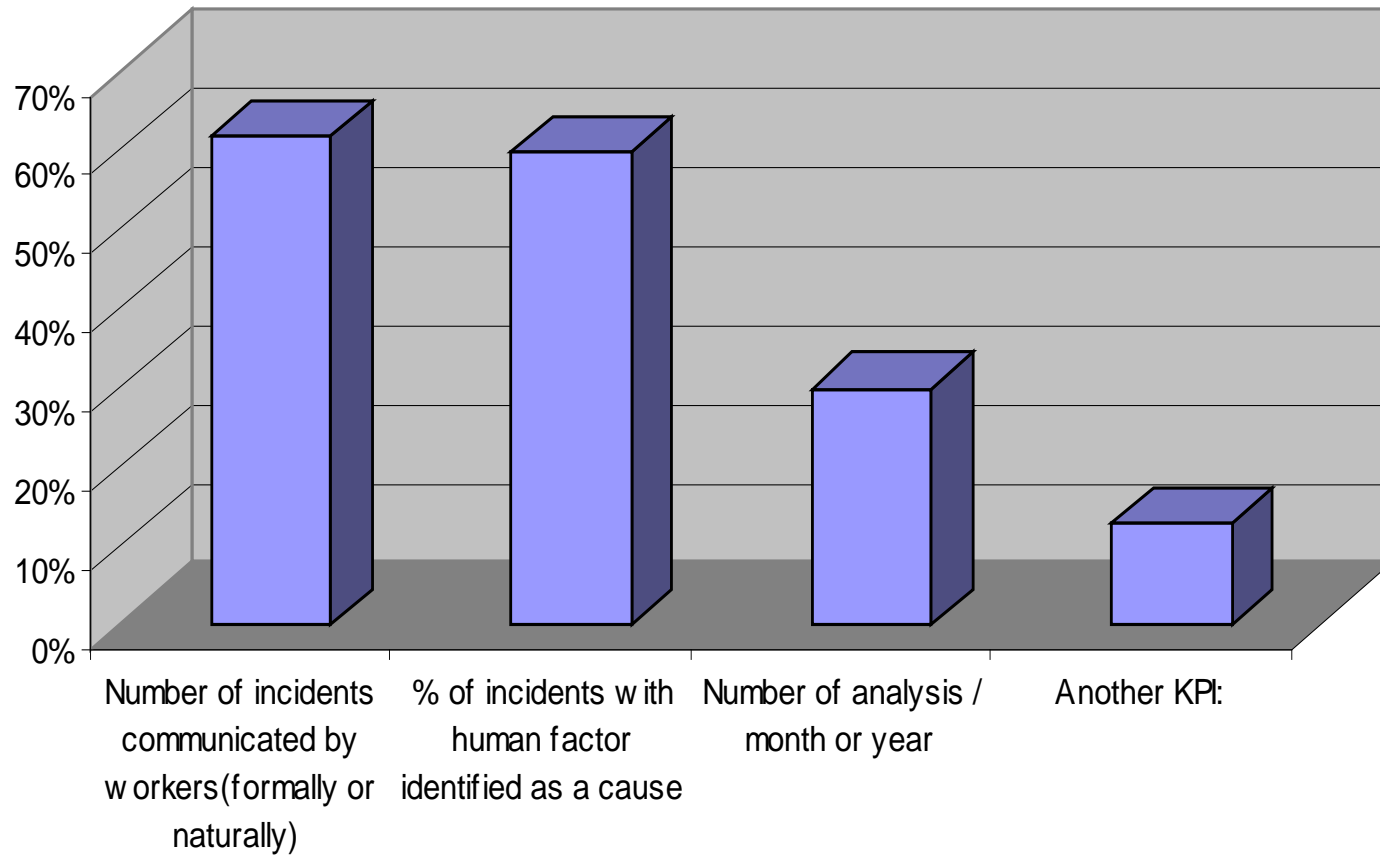
Human Factor and Competence

- 40% considered safety an important human factor in the engineering stage
- more than 65% considered safety an important human factor during operations during and emergency

**Do you analyse activities of your workers?
(Answers for all countries)**



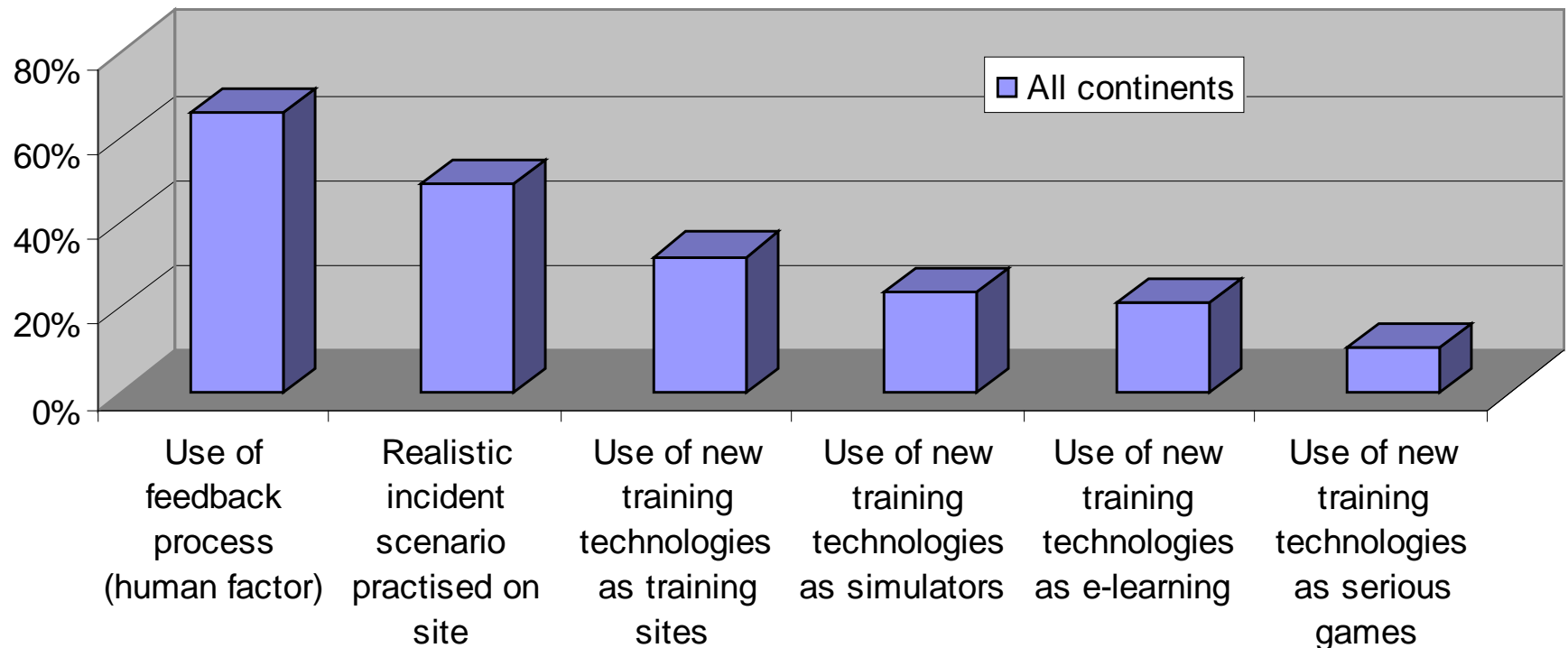
KPIs used



Human Factor and Competence

- Development and maintaining competence

Which of these types of processes and/or procedures do you use?



Conclusions and recommendations

- More focus and attention
- Static more than dynamic
- More short term than long term
- Conservative
- More progressive in newer gas countries

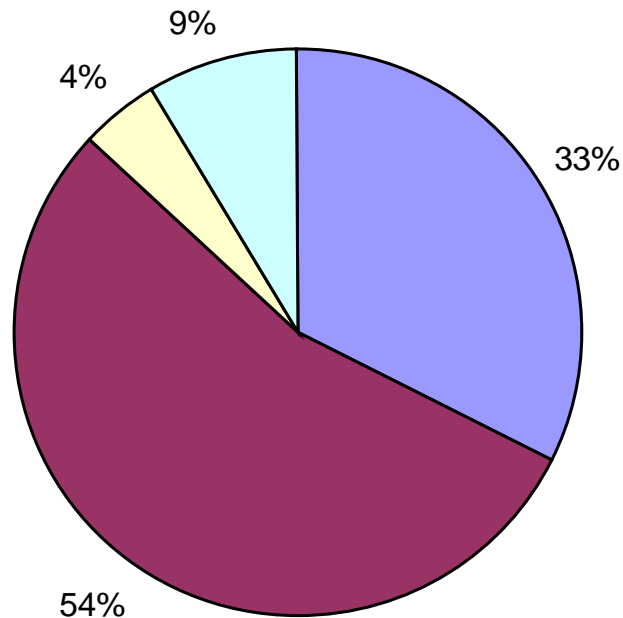
Inspection and Maintenance

Questions

- What systems are in use
- Who is involved in setting the companies KPI's
- What types of inspection strategies are used?

- Management System implemented

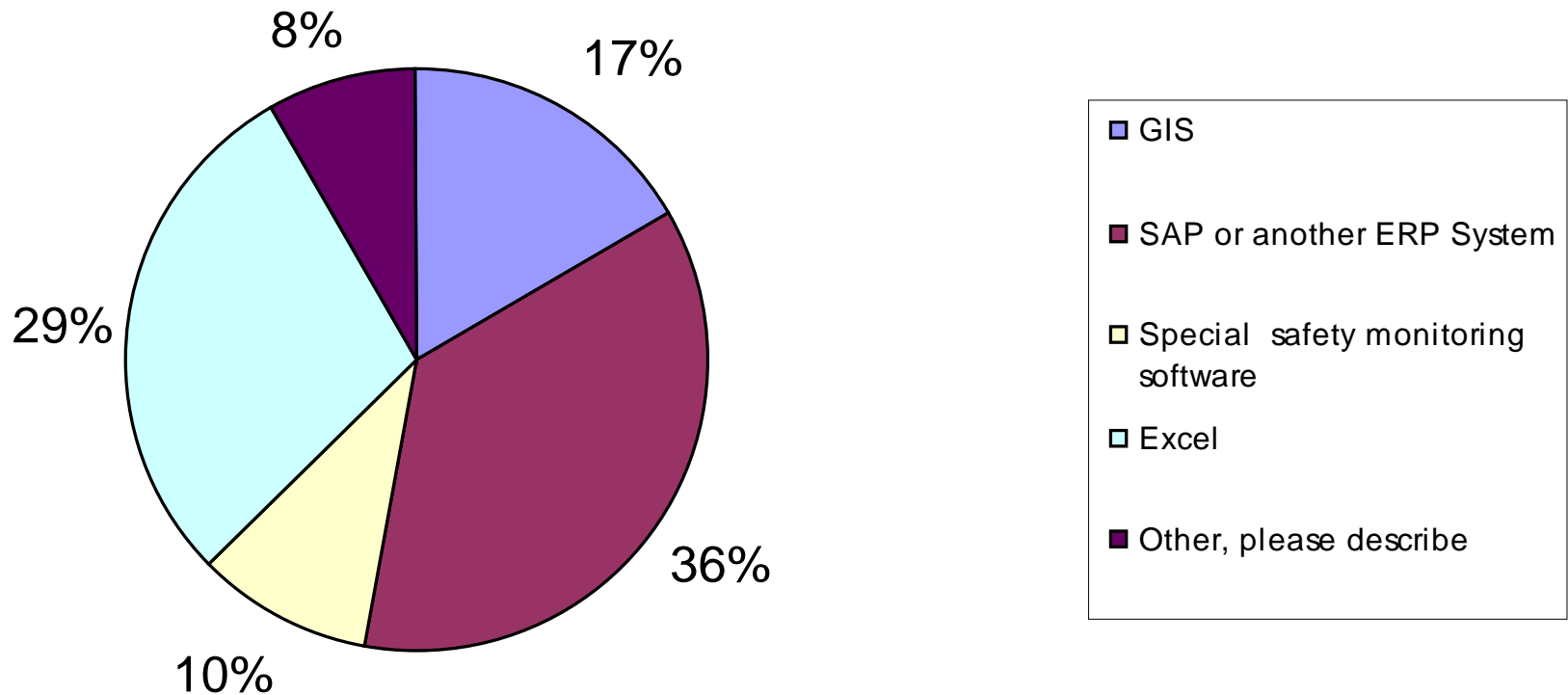
What system have you implemented to improve maintenance and inspections KPIs?



- Annual regular review
- Quality Management System (ISO 9001; PAS 55; TCM ...)
- No system implemented
- Other, please describe

Information Systems

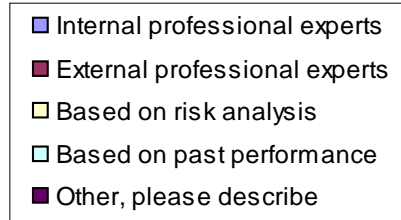
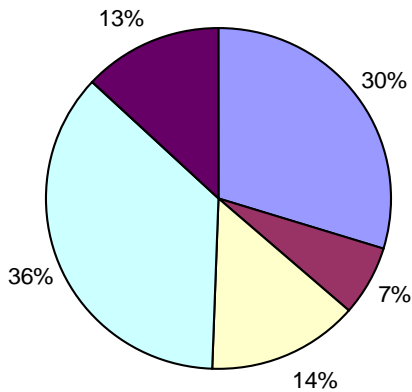
Which format do you use to administer safety KPIs? Can select multiple answers.



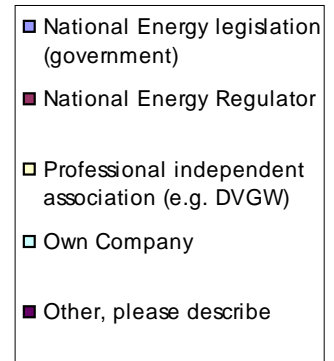
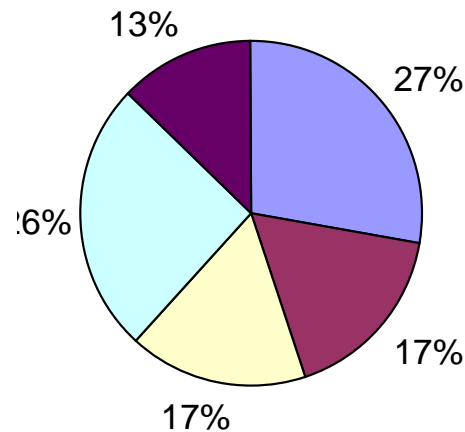
Inspection and Maintenance

■ Setting KPI's, rules and standards

How are the values of the KPIs set? Can select multiple answers.



Who establishes the rules and standards for maintenance and inspection?



Conclusions and recommendations

- Setting Process Safety KPI's should be an inclusive process
- Reporting and administering KPI's needs control and validation

Emergency Arrangements and Response

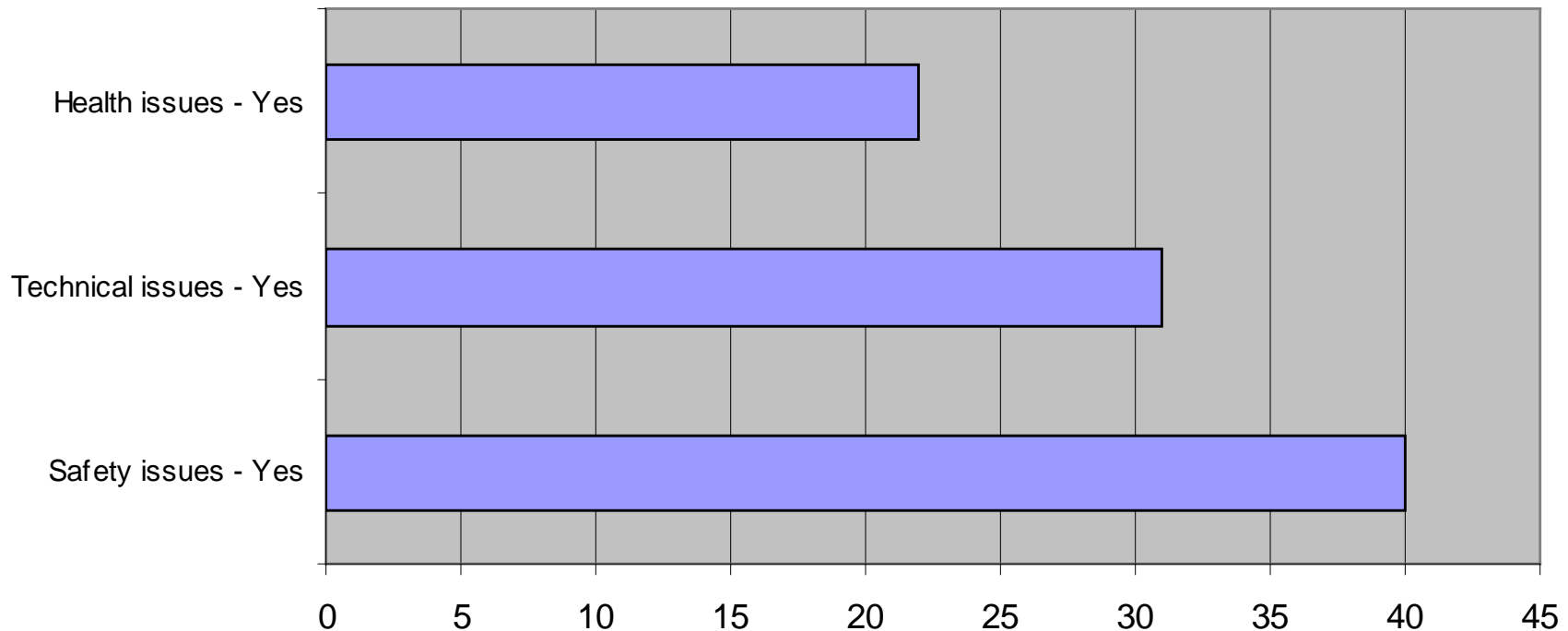
Questions

- Who is involved in setting emergency response arrangements
- The funding arrangements
- How the processes are resourced

Emergency Arrangements and Response

- Influence of mandatory regulation

Please indicate whether mandatory regulation in gas distribution influence on the following issues: (can select multiple answers)



Emergency Arrangements and Response

Funding and Resources

- 50% of companies: costs not covered in network tariffs
- First response by one person
- Mainly insourced
- Training once a year together with third parties

Conclusions and recommendations

- Great differences in KPI's
 - Definitions
 - Influence of legislation and regulation

- Standardization is recommended

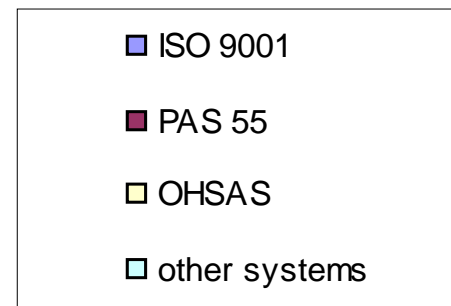
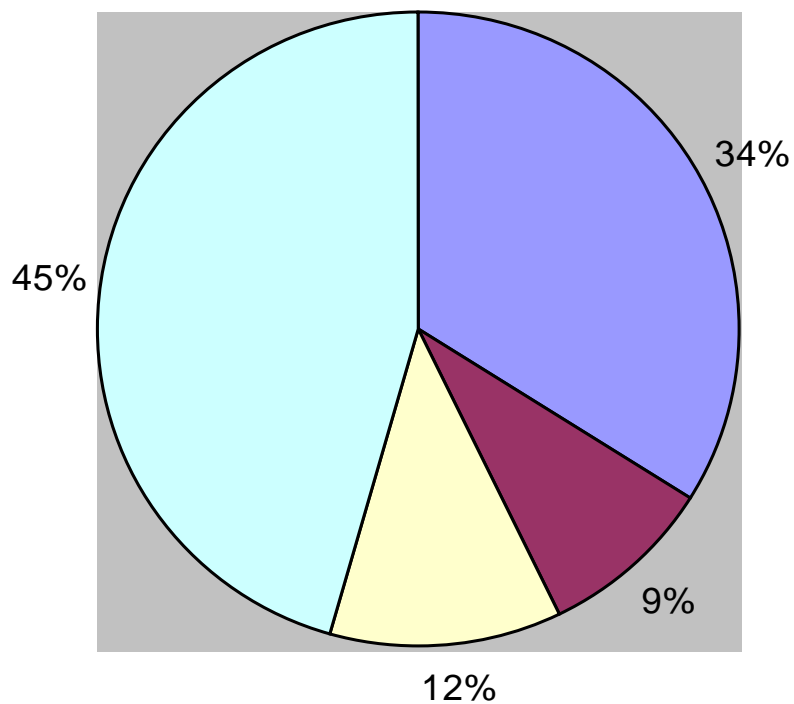
- Professional training and communication

Audit and review

Questions

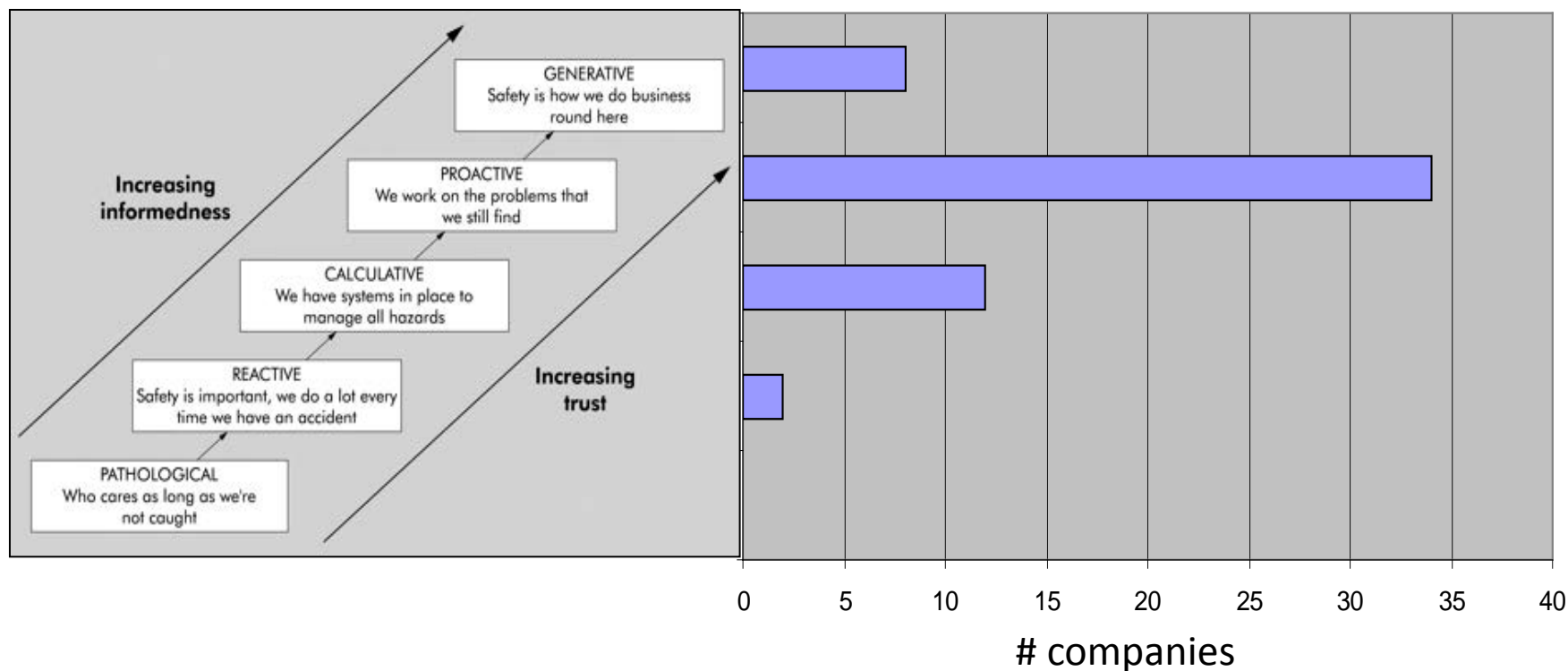
- What external standards are used for the safety management systems
- How the systems are assessed and validated

Which certification system is in use for safety management systems in your company? Can select multiple answers.



- Maturity of Safety Management system

How mature do you think your safety management system is? Select only one.



Summary Conclusions

- Safety management is a number one priority for gas distribution companies all over the world.
- Human factor seems now to be the major risk of gas distribution industry after third part damages.
- Gas companies are using the progressive competence development solutions only in a limited way
- A large proportion of respondents used excel based reporting to provide KPI's. This could present a risk in terms of data quality and thereby value of the reporting.
- Emergency arrangements are different between the countries because they are determined and influenced by national legislation and regulation in accordance with national rules.
- There is no world wide standard for a holistic safety management system. ISO9001 is widely used.

Summary Recommendations

- It is recommended that companies bring a balance between leading and lagging process indicators and continually review their set KPI values in order to ensure they are fully relevant in a changing environment.
- Because of the risk it is recommended to introduce a human factor KPI in the Board Survey: “% of incidents with human factor identified as a cause” should be a good proposal
- Where possible, an end to end system that draws the data from a “core” system is recommended thereby limiting the “human” interaction and manipulation.
- Professional periodical emergency training is necessary. Trainings for all staff (in sourced and outsourced) in cooperation with fire brigades and professional organizations should be organized.



25th world gas conference
"Gas: Sustaining Future Global Growth"

Thank you for your attention



Patron



Host



Host Sponsor

